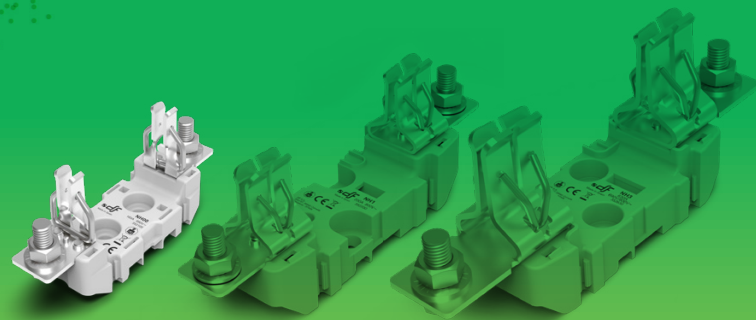
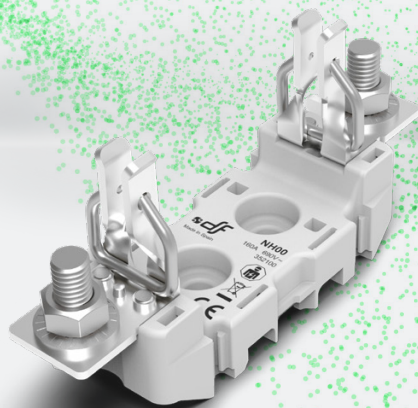


PHOTOVOLTAIC

FUSE LINKS & FUSE HOLDERS FOR PHOTOVOLTAIC APPLICATIONS

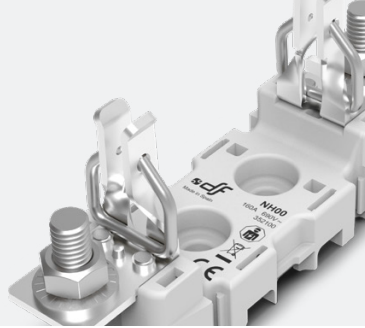
NH ST 800V AC

bases for NH fuse links
INVERTER PROTECTION



PROTECTING THE WORLD





RATED CURRENT

160A

RATED VOLTAGE

690V AC
800V AC

MAXIMUM POWER DISSIPATION

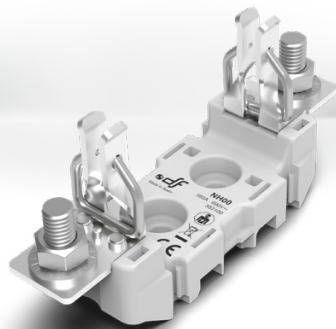
12W

PROTECTION INDEX

IP00
IP20

STANDARDS

IEC/EN 60269-1
IEC/EN 60269-2
DIN 43620



ST fuse bases for NH Knife-blade fuse links

Manufactured with a high quality materials

- Silver plated copper contacts.
- Plastic materials with high temperature resistance and self-extinguishable.
- All the materials are according to the European Directive RoHS (Restriction of the use of certain hazardous substances in electrical material).



For mounting on DIN/EN rail or with screw fixing.

Single-phase or three-pole type.

Connection by screws, fixed nut or clamps.

Contacts with double spring in order to obtain an optimum operation.

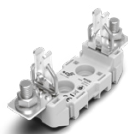
Wide range of accessories (contact covers, fuse link covers, partition walls) that enables IP20 protection index.

Multi-pole units can be made with connection accessories.

Manufactured according IEC, EN and DIN standards.

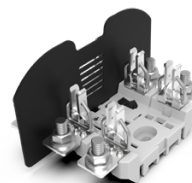
Range

POLES	FIXING	CONNECTION	REFERENCE	PACKING Uni /BOX
1P	SCREW	SCREW	354100	3/54
		CLAMP	354105	3/54
		CLAMP-SCREW	354110	3
	DIN RAIL/SCREW	FIXED SCREW	354115	3/54
		SCREW	352100	3/54
		CLAMP	352105	3
		CLAMP-SCREW	352110	3
		FIXED SCREW	352115	3/54

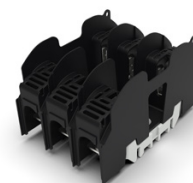


352100

POLES	FIXING	CONNECTION	REFERENCE	PACKING Uni /BOX
1P	SCREW	SCREW	353102	1/20
		CLAMP	353105	1/20
		CLAMP-SCREW	353110	1/20
	DIN RAIL/SCREW	FIXED NUT	353115	1/20
		SCREW	335120	1
		CLAMP	335125	1
3P	DIN RAIL/SCREW WITH TERMINAL COVERS	CLAMP-SCREW	335130	1
		FIXED NUT	335135	1
		SCREW	334717	1
	DIN RAIL/SCREW WITH IP20 PROTECTION	CLAMP	334720	1
		CLAMP-SCREW	334725	1
		FIXED NUT	334730	1



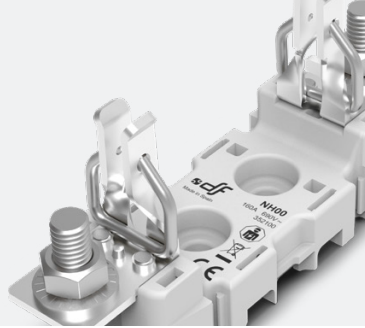
353102



335120



334717



Accessories

REFERENCE	DESCRIPTION	PACKING Uni /BOX
326100	PARTITION WALL DIRECTLY FIXED TO THE BODY	2
325100	SEPARATOR MULTIPOLE UNITS SEPARATOR	2
325000	TERMINAL COVER SINGLE POLE	6
325009	TERMINAL COVER THREE POLE INTEGRAL WITH PARTITION WALLS	1
325010	FUSE LINKS COVER	3
325030	IP20 PROTECTION KIT SINGLE POLE	1
325032	IP20 PROTECTION KIT THREE POLE	1
341100	NEUTRAL LINK	3
357010	MICROSWITCH	1/12
340001	FUSE PULLER	1

TERMINALS

	CROSS SECTION (mm ²)	CABLE	
343100	50/6	1	3
343160	95/10	1	3
344100	50/6	2	3
344160	95/10	2	3

Technical data

Rated current	160A	
Rated voltage	690V AC 800V AC 750V DC	
Rated power dissipation	12W	
Protection index	IP00 / IP20	
Ambient temperature of service	-20°C ... 80°C	
Storage temperature	-40°C ... 80°C	
Correction of the admissible current in function of the temperature	20° C	1
	30° C	0,95
	40° C	0,90
	50° C	0,80
	60° C	0,70
	70° C	0,60
	80° C	0,50

Standards

IEC/EN 60269-1
IEC/EN 60269-2
DIN 43620

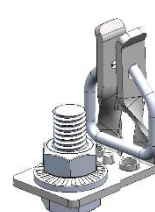
Application characteristics

Mounting	DIN/EN Standard Rail DIN 46277/1-3 (EN50022) Screws		
Connecting wire	M8 SCREW 2xM6 CLAMP		
Maximum tightening torque on terminals	10 Nm SCREW 4 Nm CLAMP		
Maximum tightening torque fuse holder fixation with screws	5 Nm		
Cable cross sectional area Clamp connection	MIN	MAX	
	Solid	0,75mm ²	70mm ²
	Stranded	1mm ²	70mm ²
Multipolar assembly	▶ FIG. 1		

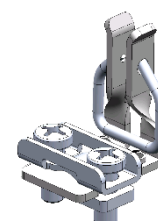
Materials

Contacts	Silver plated copper
Body	Thermoplastic, high resistance to temperature Flammability: (UL94) V0 Glow wire test: (IEC-60695) 960°C
Partition walls	Thermoplastic, high resistance to temperature Flammability: (UL94) V0 Glow wire test: (IEC-60695) 960°C
Separators	Thermoplastic, high resistance to temperature Flammability: (UL94) V0 Glow wire test: (IEC-60695) 960°C
Terminal covers	Thermoplastic, high resistance to temperature Flammability: (UL94) V0 Glow wire test: (IEC-60695) 960°C
Fuse links covers	Thermoplastic, high resistance to temperature Flammability: (UL94) V2 Glow wire test: (IEC-60695) 850°C
Accessory terminals	Tin plated brass Zinc plated steel screws

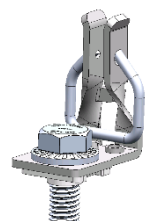
Connection types



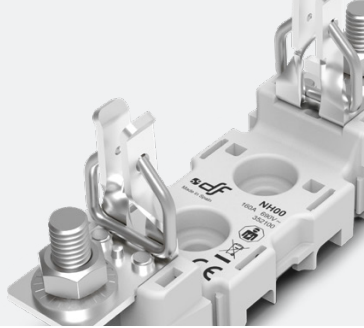
SCREW



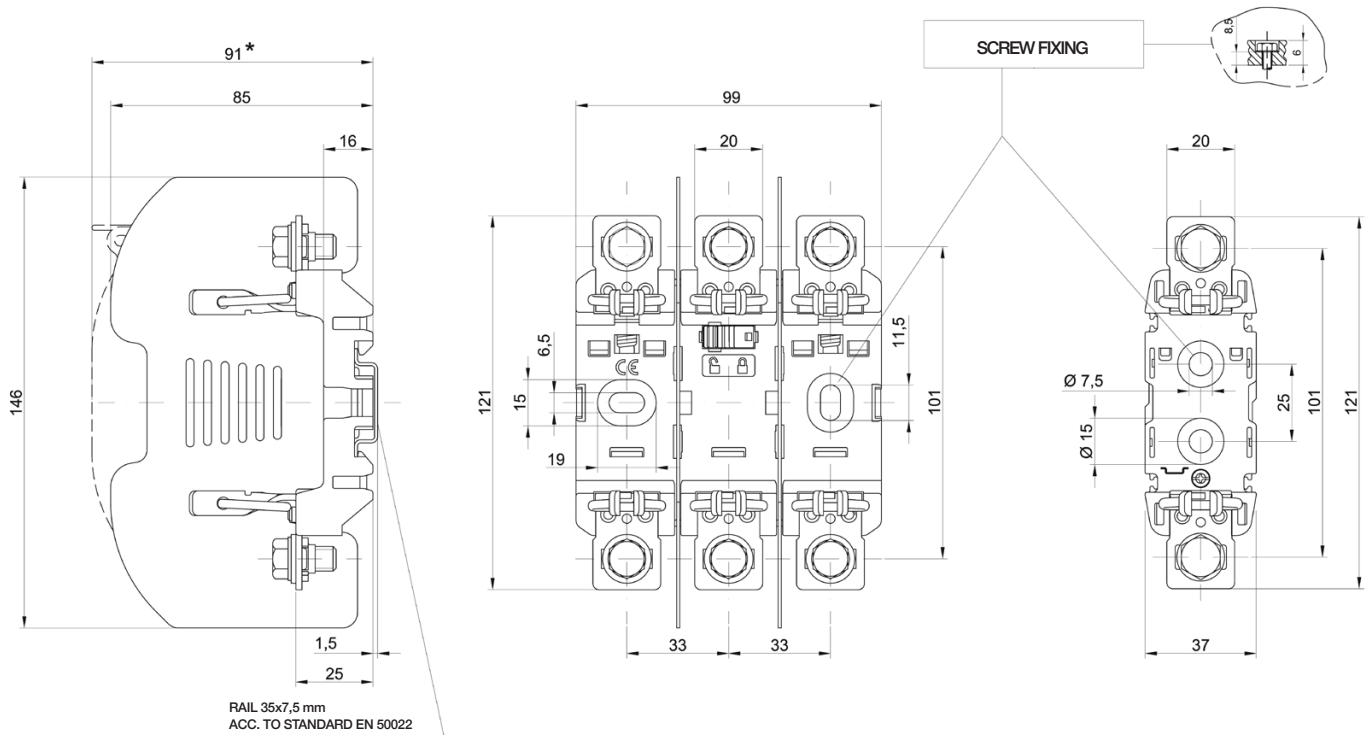
CLAMP



FIXED NUT



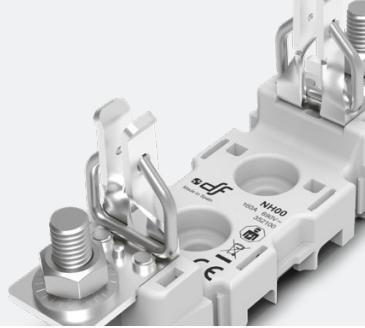
Dimensions



Weight

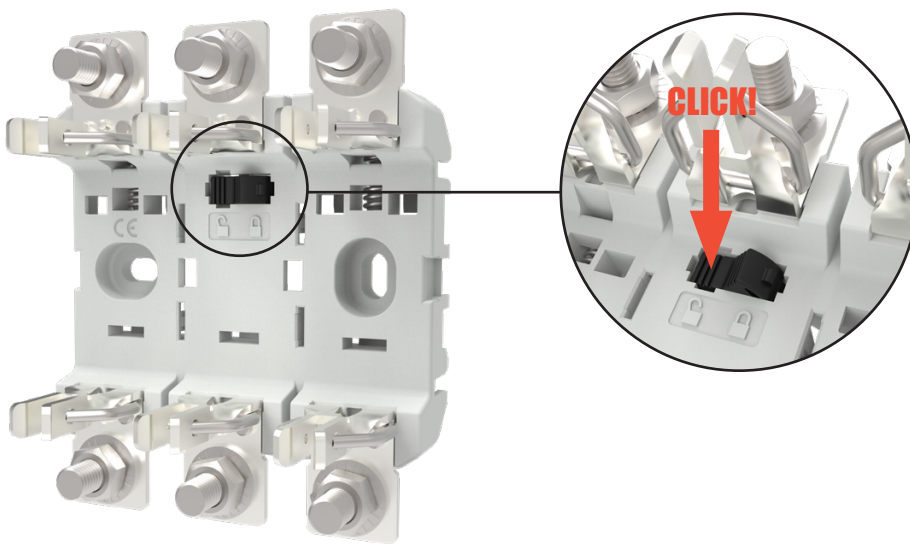
1P	120gr
3P standard	370gr
3P with terminal covers	430gr
3P with IP20 protection	465gr

Weight without packing



Three pole DIN rail fixation

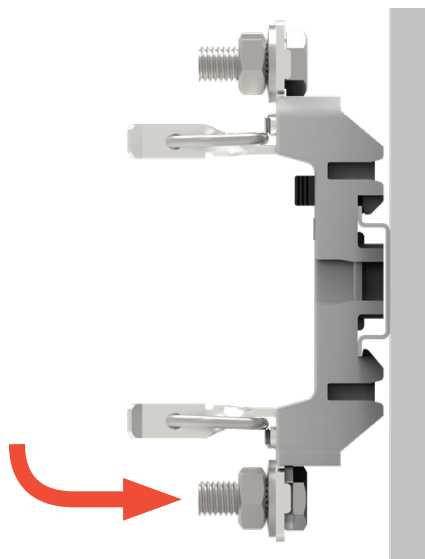
1



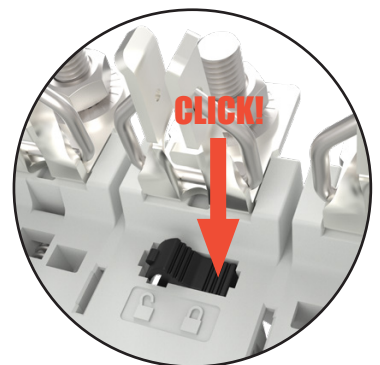
2

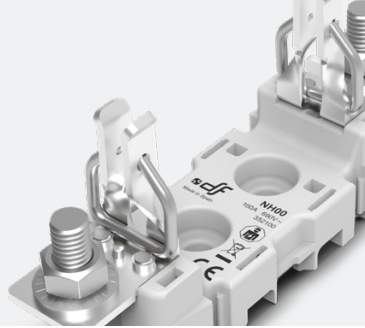


3

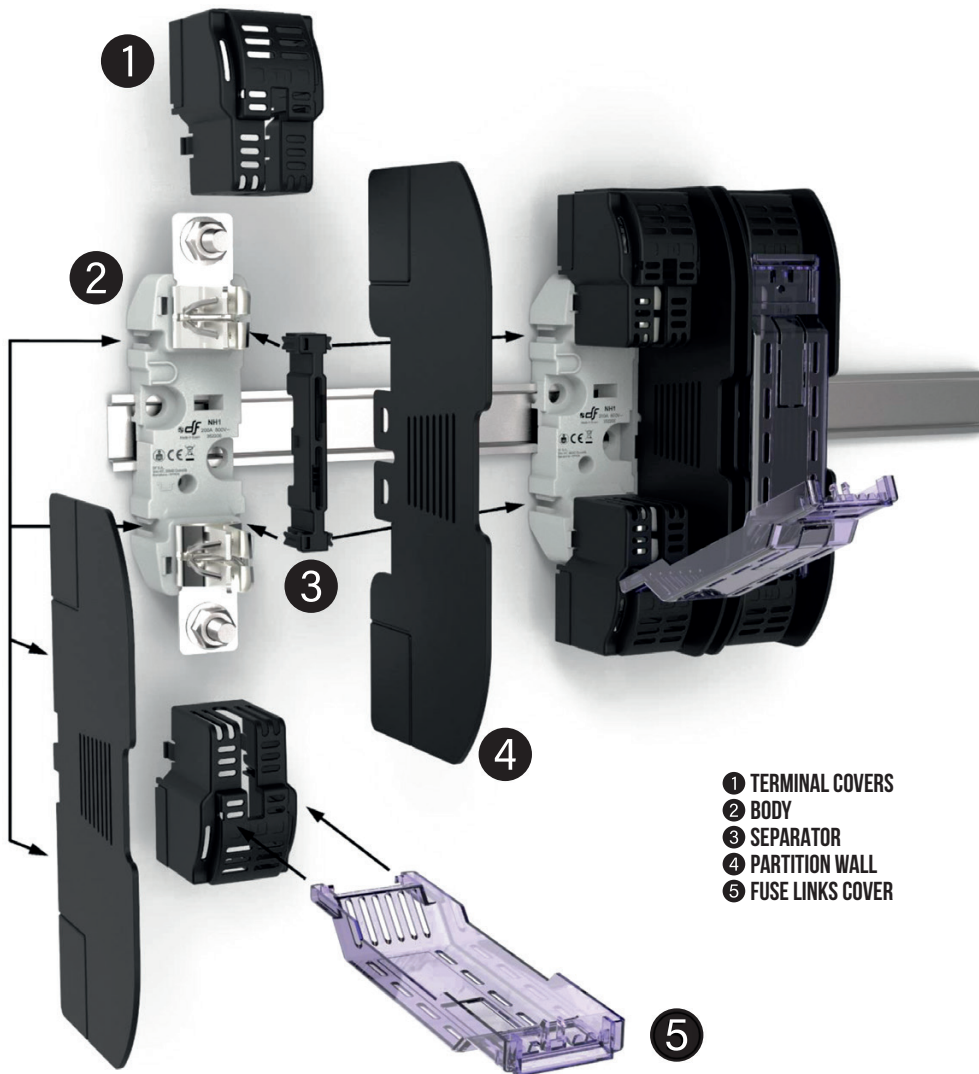


4





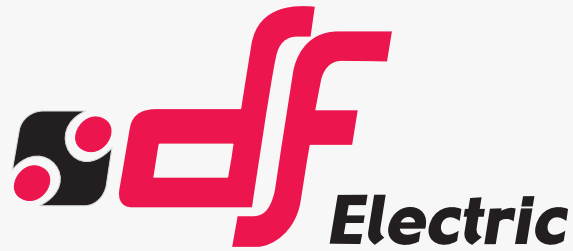
Accessories assembly



- 1 TERMINAL COVERS
- 2 BODY
- 3 SEPARATOR
- 4 PARTITION WALL
- 5 FUSE LINKS COVER

The fuse holder allows using simultaneously a microswitch for NH fuse links and IP20 protection accessories





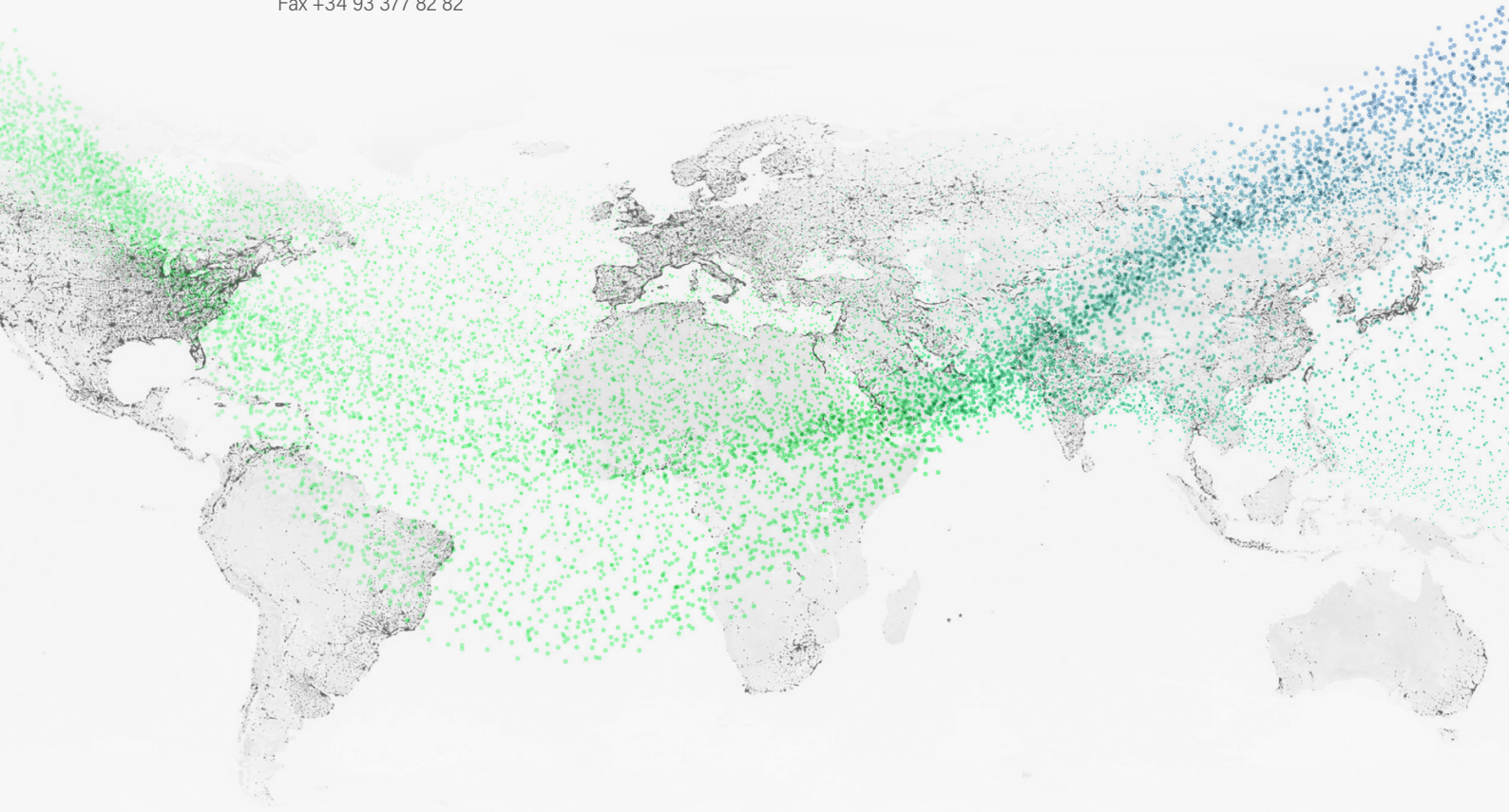
PROTECTING THE WORLD



HEAD OFFICE AND FACTORY
 SILICI, 67-69
 08940 CORNELLA DE LLOBREGAT
 BARCELONA · SPAIN
 Tel. +34 93 377 85 85
 Fax +34 93 377 82 82

INTERNATIONAL SALES
 Tel. +34 93 475 08 64
 Fax +34 93 480 07 75
 export@dfelectric.es

NATIONAL SALES
 Tel. 93 475 08 64
 Fax 93 480 07 76
 comercial@dfelectric.es



dfelectric.es



According to the waste of electrical and electronic equipment directive, electrical material should not be part of the usual waste. This symbol alerts users that these products should be recycled according to local environmental waste disposal regulations.



The "electro technical expert" logo marked on the products included in this data sheet indicates that the installation of these products must be carried out by expert personnel with specialized knowledge.



To prevent electrical hazards, carry out the installation without voltage.



Safety notice
 Please capture the following QR code and read our safety notice carefully before installing our products.



The data reflected in this technical record are subject to the correct installation of the product in accordance with manufacturer's instructions, relevant installation standards and professional practices, maintained and used in applications for which they were made.

The products described in this document have been designed, developed and tested in accordance with specific standard. They are considered components that are integrated as part of installation, machine or equipment. The correct general operation of the referred product is responsibility of the manufacturer of the installation, machine or equipment.

DF ELECTRIC cannot guarantee the characteristics of an installation, machine or equipment that has been designed by a third party. Once a product has been selected, the user must verify that it is appropriate for its application, through the verifications and/or tests that it deems appropriate.

DF ELECTRIC retains the right to change the dimensions, specifications, materials or design of its products at any time with or without notice.