

## PMX

industrial modular fuse holders  
for cylindrical fuse links

PMX

8x32



8x32



10x38

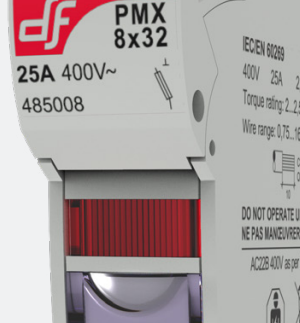


14x51



22x58

## PROTECTING THE WORLD



RATED CURRENT

25A

RATED VOLTAGE

400V AC/DC

MAXIMUM POWER DISSIPATION

3W

PROTECTION INDEX

IP20

STANDARDS

IEC/EN 60269-1

IEC/EN 60269-2



## Industrial modular fuse holders for cylindrical fuse links

Modular fuse holder for cylindrical fuse link size 10x38 according IEC/EN 60269 standard.

Compact design, with reduced dimensions.

Ventilation zones optimized for a better heat dissipation.

Manufactured with a high quality materials

- Silver plated copper contacts.
- Plastic materials with high temperature resistance and self-extinguishable.
- All the materials are according to the European Directive RoHS.





Extended range of accessories is available.

## Accessories

REFERENCE	DESCRIPTION	PACKING Uni /BOX
<b>480005</b>	PINS FOR MULTIPOLE ASSEMBLY	12/300
<b>485050</b>	HANDLE TIES FOR MULTIPOLE ASSEMBLY	12/300
<b>485051</b>	LOCK ACCESSORY	5
<b>485052</b>	SPECIAL IP20 PROTECTION ACCESSORY	24
<b>485053</b>	PHASE SEPARATOR ACCESSORY	12
<b>485054</b>	FUSING NEON INDICATOR REPLACEMENT	6
<b>485656</b>	SCREWS PROTECTION ACCESSORY	20

## Range

Un	REFERENCE		POLES	MODULES	PACKING Uni /BOX
	WITHOUT INDICATOR	WITH INDICATOR			
400V AC/DC					
	<b>485001</b>	<b>485008</b>	1P	1	12/180
	<b>485003</b>	<b>485009</b>	1P + N	2	6/90
	<b>485004</b>	<b>485010</b>	2P	2	6/90
	<b>485005</b>	<b>485011</b>	3P	3	4/60
	<b>485006</b>	<b>485012</b>	3P + N	4	3/45
	<b>485007</b>	<b>485013</b>	4P	4	3/45

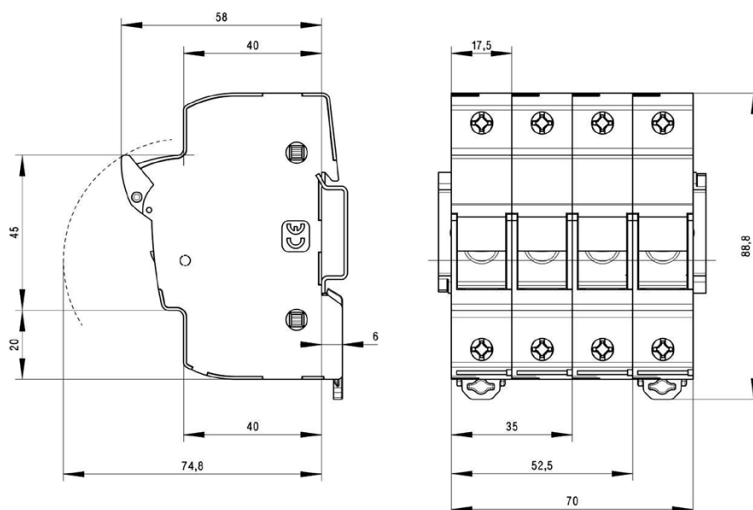


## Technical data

Rated current	25A	
Rated voltage	400V AC/DC	
Rated power dissipation	2,5W	
Maximum power dissipation	3W	
Power dissipation per pole	80% $I_n > 0,16W$ 100% $I_n > 0,25W$	
Utilization category as per EN 60947-3	AC-22B	
Pollution degree	3	
Protection index *	IP20	
Rated impulse withstand voltage	6kV U imp	
Ambient temperature of service	-20°C ... 70°C	
Storage temperature	-40°C ... 80°C	
Derating by number of poles	POLES	$I_{MAX}$
	1 ... 4	$I_n$
	5 ... 6	$0,8 \times I_n$
	7 ... 9	$0,7 \times I_n$
	$\geq 10$	$0,6 \times I_n$
Correction of the admissible current in function of the temperature	20° C	1
	30° C	0,95
	40° C	0,90
	50° C	0,80
	60° C	0,70
	70° C	0,60

\* For wires of section  $\leq 6mm^2$  is necessary the use of the accessory to guarantee IP20 in clamps zone. ► **FIG. 4**

## Dimensions



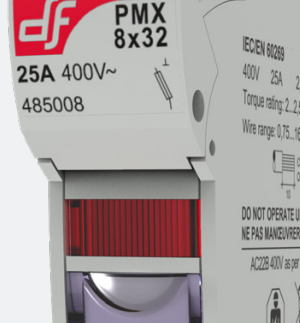
## Weight

1P	57gr
N	60gr
1P + N (2 modules)	117gr
2P	114gr
3P	171gr
3P + N (4 modules)	231gr
4P	228gr

Weight without packing

## Standards

IEC/EN 60269-1  
IEC/EN 60269-2



## Application characteristics

### For mounting on DIN/EN standard rail


DIN 46277/1-3 (EN50022)  
Clip fixation with 2 positions

### Screw fixation

Available with accessory  
► **FIG. 7**

### Connecting wire

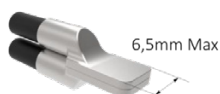
Copper wires only

WIRES	METRIC	AWG	WIRING
1	0,75...16mm <sup>2</sup> Solid / Stranded	8....18 AWG Solid / Stranded	
2	0,75...10mm <sup>2</sup> Solid	8....18 AWG Solid	
Same cross section and type		0,75...6mm <sup>2</sup> Stranded	

### Wire-end terminals

The use of wire-end terminals may allow to increase the connecting wire section.

Wire-end terminals recommended mounting:



The use of wire-end terminals could not guarantee the IP20 protection degree.

### Ferrules

It's recommended use of ferrules in wires with section ≤ 2,5mm<sup>2</sup>



The product is delivered with the terminals opened and ready to connect

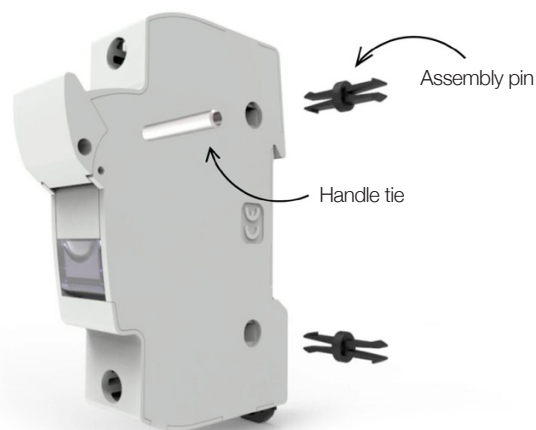
Tightening torque on terminals	2...2,5 Nm 18...22 lb.in
Screws with a combined head	SLOT + PZ2
Multipolar assembly	► <b>FIG. 1</b>
Fuse holders with fuse indicator	NEON LAMP 120...400V AC
Special zone for sealing	1,5 mm <sup>2</sup> wire
Label holder for a better circuit identification	► <b>FIG. 2</b> Suitable size for label: 11x9 mm
Accessory available to lock the fuse holder by a padlock	► <b>FIG. 3</b> (max. 3 padlocks of Ø 3mm)

## Accessories

**FIG. 1 | Multipolar assembly**

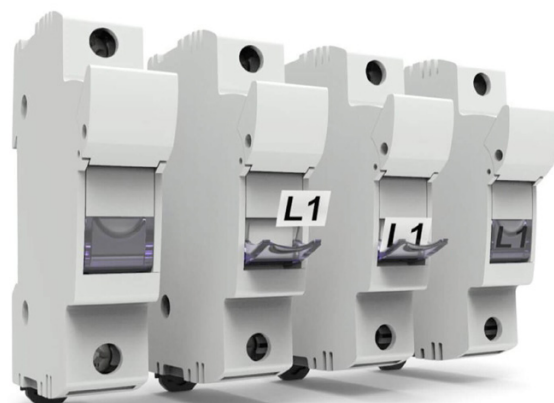
Standard system by DF, 2 clips and 1 pin for each union between poles

<b>480005</b>	PINS FOR MULTIPOLE ASSE
<b>485050</b>	HANDLE TIES FOR MULTIPOLE ASSEMBLY



**FIG. 2 | Identification by label**

Open the label holder part with the fuse holder closed, put on the label and close it



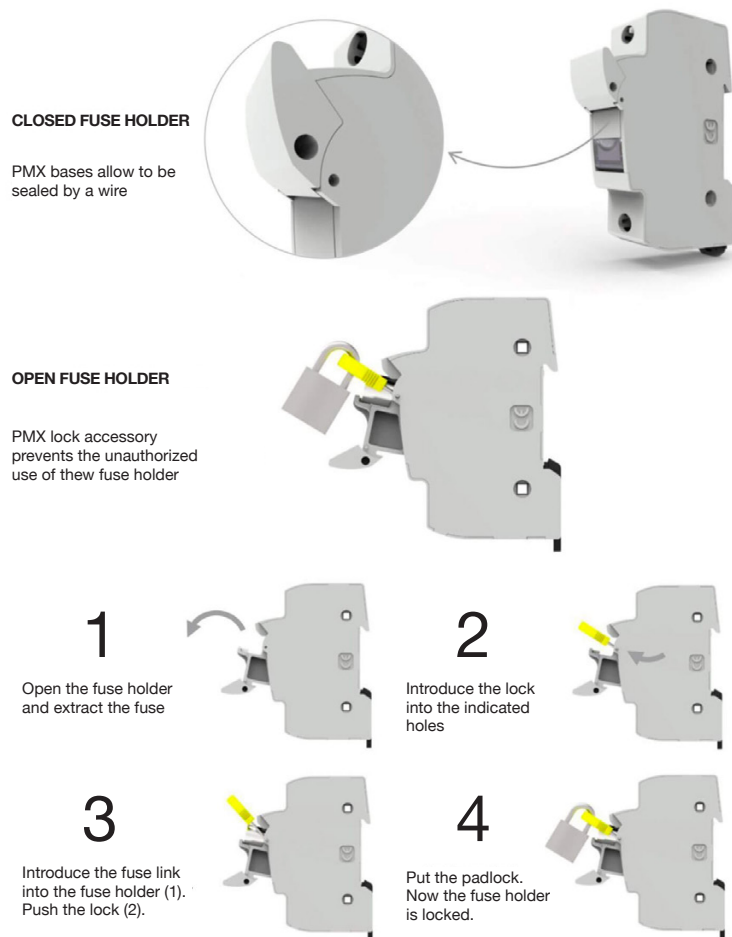
Label measures **11x9mm**

## Accessories

**FIG. 3 | Lock of the fuse holder**

Systems to avoid the operation and connection when the fuse holder is open or closed

**485051** LOCK ACCESSORY



**FIG. 4 | Special IP20 protection**

The accessory must be positioned in the wire entries, if it's necessary to achieve the IP20 degree of protection with thin wires

**485052** SPECIAL IP20 PROTECTION ACCESSORY

Manual assembly



**FIG. 5 | Phase separator accessory**

The accessory increases the distance between phases in multipolar assemblies

**485053** PHASE SEPARATOR ACCESSORY



## Accessories

**FIG. 6 | Screws protection accessory**

Protection accessory to avoid the screws manipulation and improve the protection degree

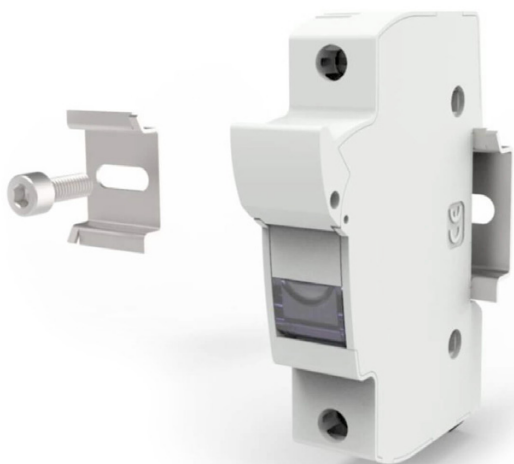
**485656** SCREWS PROTECTION ACCESSORY

Manual assembly



**FIG. 7 | Screw fixation accessory**

First mount the accessory with screws, then mount the fuse holder (there are available different accessories depending on the number of the fuse holder)



**FIG. 8 | Fusing indicator replacement instructions**

**485054** FUSING NEON INDICATOR REPLACEMENT

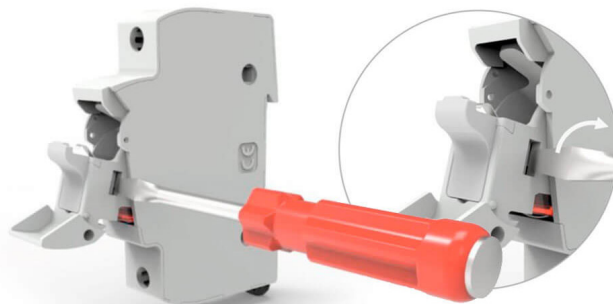
1

Open the fuse holder



2

Using a flat screwdriver, remove the cover with a slight rotation of the tool



3

Replace the fusing indicator. Enter the cover on the handle with a slight angle







## PROTECTING THE WORLD



### HEAD OFFICE AND FACTORY

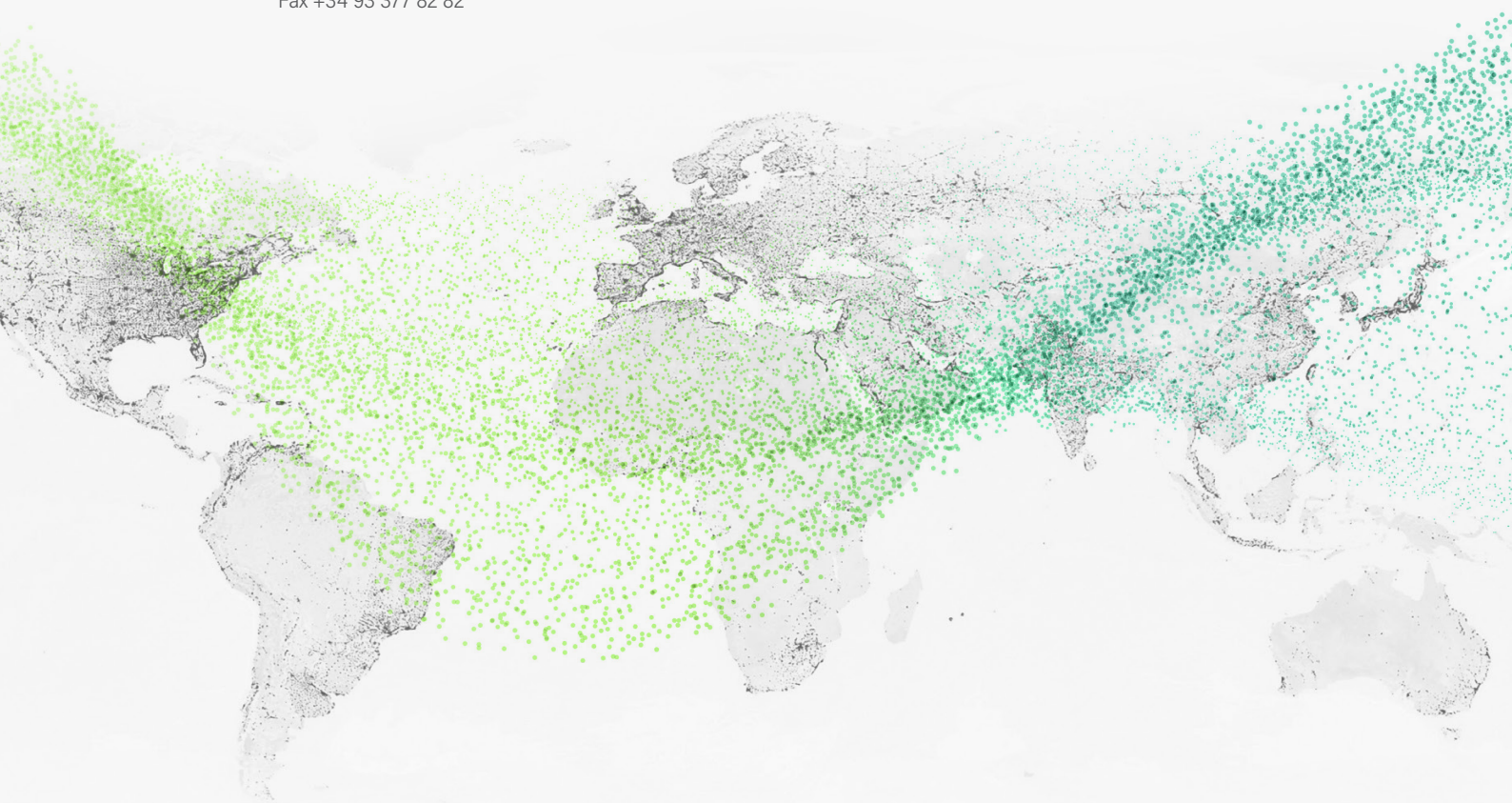
SILICI, 67-69  
08940 CORNELLA DE LLOBREGAT  
BARCELONA · SPAIN  
Tel. +34 93 377 85 85  
Fax +34 93 377 82 82

### INTERNATIONAL SALES

Tel. +34 93 475 08 64  
Fax +34 93 480 07 75  
export@dfelectric.es

### NATIONAL SALES

Tel. 93 475 08 64  
Fax 93 480 07 76  
comercial@dfelectric.es



dfelectric.es



According to the waste of electrical and electronic equipment directive, electrical material should not be part of the usual waste. This symbol alerts users that these products should be recycled according to local environmental waste disposal regulations.



The "electro technical expert" logo marked on the products included in this data sheet indicates that the installation of these products must be carried out by expert personnel with specialized knowledge.



To prevent electrical hazards, carry out the installation without voltage.



**Safety notice**  
Please capture the following QR code and read our safety notice carefully before installing our products.



The data reflected in this technical record are subject to the correct installation of the product in accordance with manufacturer's instructions, relevant installation standards and professional practices, maintained and used in applications for which they were made.

The products described in this document have been designed, developed and tested in accordance with specific standard. They are considered components that are integrated as part of installation, machine or equipment. The correct general operation of the referred product is responsibility of the manufacturer of the installation, machine or equipment.

DF ELECTRIC cannot guarantee the characteristics of an installation, machine or equipment that has been designed by a third party. Once a product has been selected, the user must verify that it is appropriate for its application, through the verifications and/or tests that it deems appropriate.

DF ELECTRIC retains the right to change the dimensions, specifications, materials or design of its products at any time with or without notice.

©2021 DF Electric. All rights reserved