

NH KNIFE-BLADE

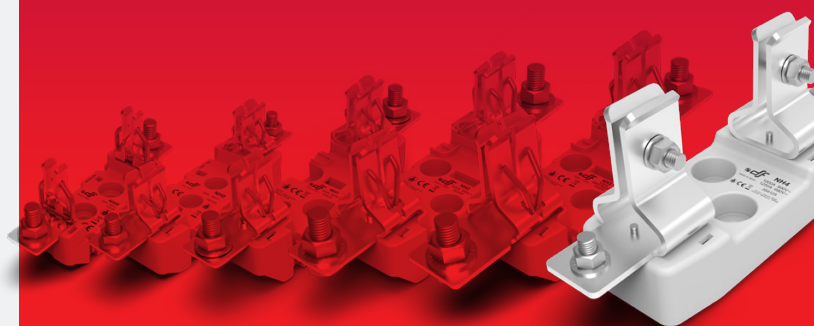
FUSE LINKS & FUSE BASES

NH ST 690V

bases for NH fuse links

ST

NH4



NH00

NH0

NH1

NH2

NH3

NH4

PROTECTING THE WORLD



ST fuse bases for NH Knife-blade fuse links

Manufactured with a high quality materials

- Silver plated copper contacts.
- Plastic materials with high temperature resistance and self-extinguishable.
- All the materials are according to the European Directive RoHS (Restriction of the use of certain hazardous substances in electrical material).



For mounting with screw fixing.

Connection by screws.

Contacts with double spring in order to obtain an optimum operation.

Manufactured according IEC, EN and DIN standards.

Manufactured with a high quality materials:

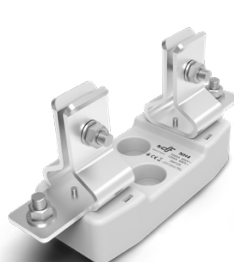
Accessories

REFERENCE	DESCRIPTION	PACKING Uni /BOX
343125	PARTITION WALL SQUARE FIXING	1
340125	NEUTRAL LINK	1
340001	FUSE PULLER	1

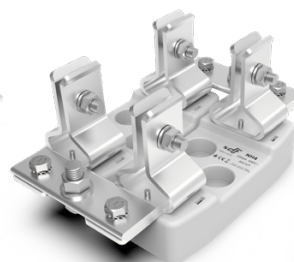
Range

POLES	FIXING	I_n (A)	CONNECTION	REFERENCE	PACKING Uni /BOX
1P	SCREW	1000 1250	SCREW	354125	1
			2 SCREWS	354128	1
		1250	SCREW	356125*	1
			2 SCREWS	356128*	1
		2500	FUSE BASE GROUP	354127	1
			SCREW	356127*	1

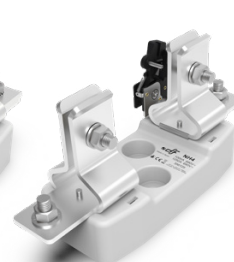
* with microswitch



354125



354127



356125



Technical data

Rated current	1000A 1250A														
Rated voltage	690V AC 750V DC														
Rated power dissipation	90W														
Protection index	IP00														
Ambient temperature of service	-20°C ... 80°C														
Storage temperature	-40°C ... 80°C														
Correction of the admissible current in function of the temperature	<table> <tr><td>20° C</td><td>1</td></tr> <tr><td>30° C</td><td>0,95</td></tr> <tr><td>40° C</td><td>0,90</td></tr> <tr><td>50° C</td><td>0,80</td></tr> <tr><td>60° C</td><td>0,70</td></tr> <tr><td>70° C</td><td>0,60</td></tr> <tr><td>80° C</td><td>0,50</td></tr> </table>	20° C	1	30° C	0,95	40° C	0,90	50° C	0,80	60° C	0,70	70° C	0,60	80° C	0,50
20° C	1														
30° C	0,95														
40° C	0,90														
50° C	0,80														
60° C	0,70														
70° C	0,60														
80° C	0,50														



DO NOT OPERATE UNDER LOAD

Standards

IEC/EN 60269-1
IEC/EN 60269-2
DIN 43620

Materials

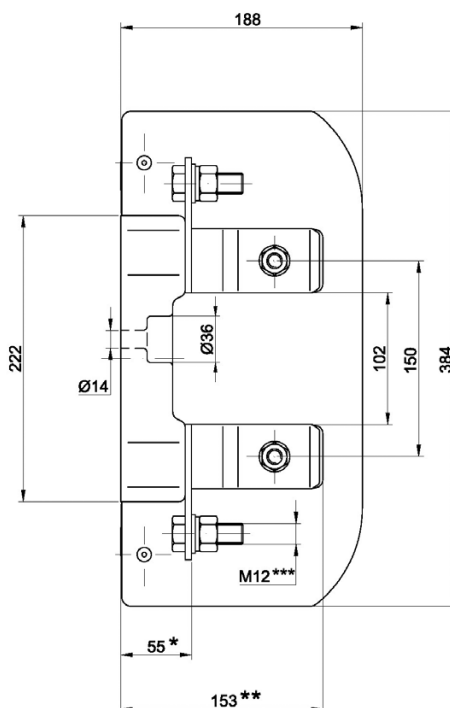
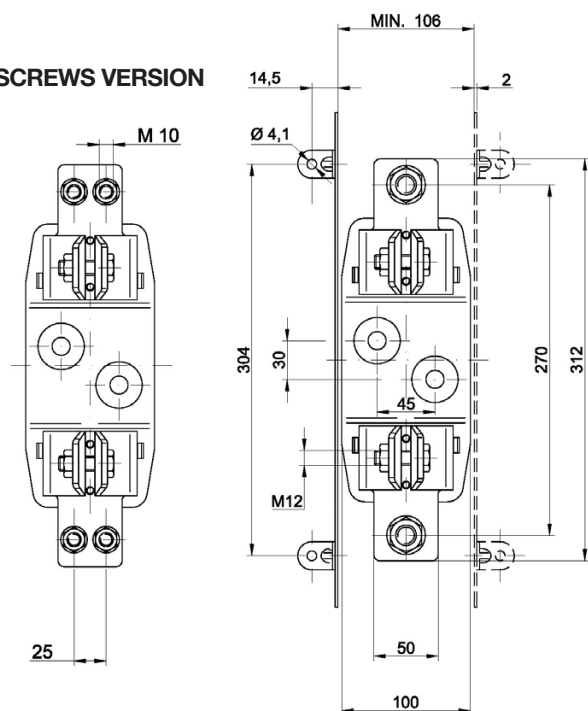
Contacts	Silver plated copper
Body	Thermosetting, high resistance to temperature
Partition walls	Laminated phenolic resin
Fuse links covers	Tin plated brass Zinc plated steel screws

Application characteristics

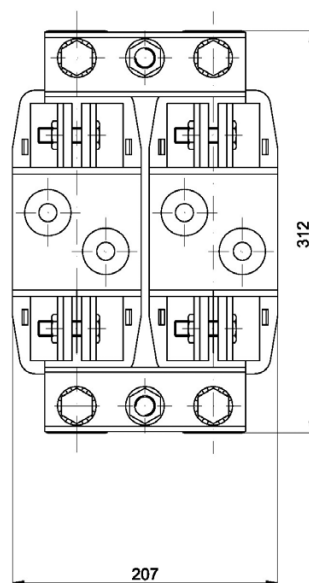
Mounting	Screws
Connecting wire	M12
Maximum tightening torque on terminals	56 Nm
Maximum tightening torque on fuse link fixation	32 Nm
Maximum tightening torque fuse holder fixation with screws	30 Nm

Dimensions

2 SCREWS VERSION



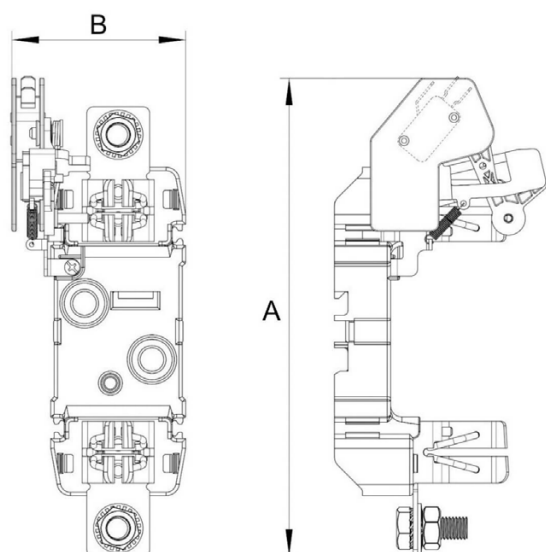
2500A VERSION



* 2500A VERSION: 63 mm
1600A VERSION: 60 mm

** 1600A VERSION: 158 mm

*** 1600A/2500A VERSION: M16

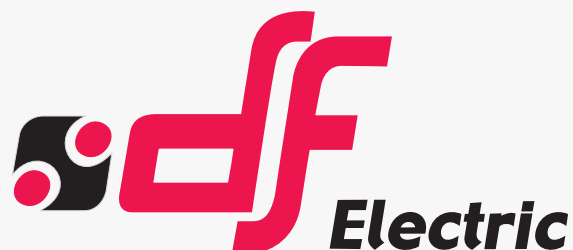


	A	B
STANDARD	284	113
2500A VERSION	284	218

Weight

1P	2,45kg
1P 2500A version	5,65kg
1P with microswitch	2,56kg

Weight without packing



PROTECTING THE WORLD



HEAD OFFICE AND FACTORY

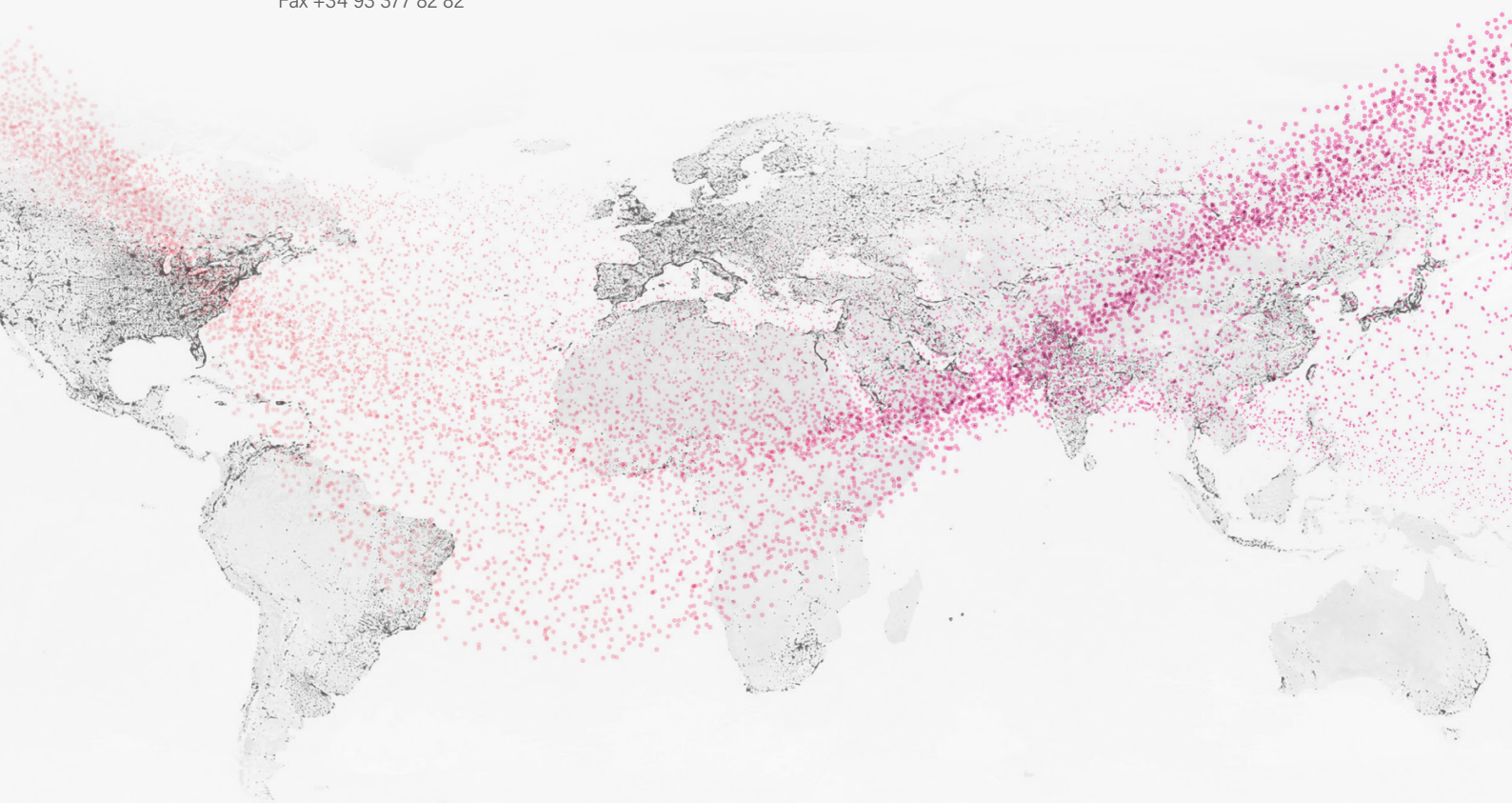
SILICI, 67-69
08940 CORNELLA DE LLOBREGAT
BARCELONA · SPAIN
Tel. +34 93 377 85 85
Fax +34 93 377 82 82

INTERNATIONAL SALES

Tel. +34 93 475 08 64
Fax +34 93 480 07 75
export@dfelectric.es

NATIONAL SALES

Tel. 93 475 08 64
Fax 93 480 07 76
comercial@dfelectric.es



dfelectric.es



According to the waste of electrical and electronic equipment directive, electrical material should not be part of the usual waste. This symbol alerts users that these products should be recycled according to local environmental waste disposal regulations.



The "electro technical expert" logo marked on the products included in this data sheet indicates that the installation of these products must be carried out by expert personnel with specialized knowledge.



To prevent electrical hazards, carry out the installation without voltage.



Safety notice
Please capture the following QR code and read our safety notice carefully before installing our products.



The data reflected in this technical record are subject to the correct installation of the product in accordance with manufacturer's instructions, relevant installation standards and professional practices, maintained and used in applications for which they were made.

The products described in this document have been designed, developed and tested in accordance with specific standard. They are considered components that are integrated as part of installation, machine or equipment. The correct general operation of the referred product is responsibility of the manufacturer of the installation, machine or equipment.

DF ELECTRIC cannot guarantee the characteristics of an installation, machine or equipment that has been designed by a third party. Once a product has been selected, the user must verify that it is appropriate for its application, through the verifications and/or tests that it deems appropriate.

DF ELECTRIC retains the right to change the dimensions, specifications, materials or design of its products at any time with or without notice.

©2022 DF Electric. All rights reserved