

# NH KNIFE-BLADE

FUSE LINKS & FUSE BASES



## gG NH 690V

fuse links



## PROTECTING THE WORLD



RATED VOLTAGE  
690V

RATED CURRENT  
6A...100A

BREAKING CAPACITY  
80kA

#### STANDARDS

IEC/EN 60269-1  
IEC/EN 60269-2



## Knife type NH gG 690V fuse links with top indicator

These high breaking capacity fuse-links are intended for protection of power lines and equipment, against overloads and short-circuits with rated voltages up to 690V (+5%).

The rated breaking capacity is 80kA.

Compact versions in low rated currents of every size.

The range comprises the following fuse links:

- Size NH0 gG 690V 6A to 100A
- Size NH0S with striker gG 690V 32A to 100A

Manufactured with ceramic body with high withstand to internal pressure and thermal shock, that allows a high breaking capacity. Knife contacts are made of silver plated copper or brass.

They are manufactured according to IEC/EN60269 Standards and comply with RoHS directive.

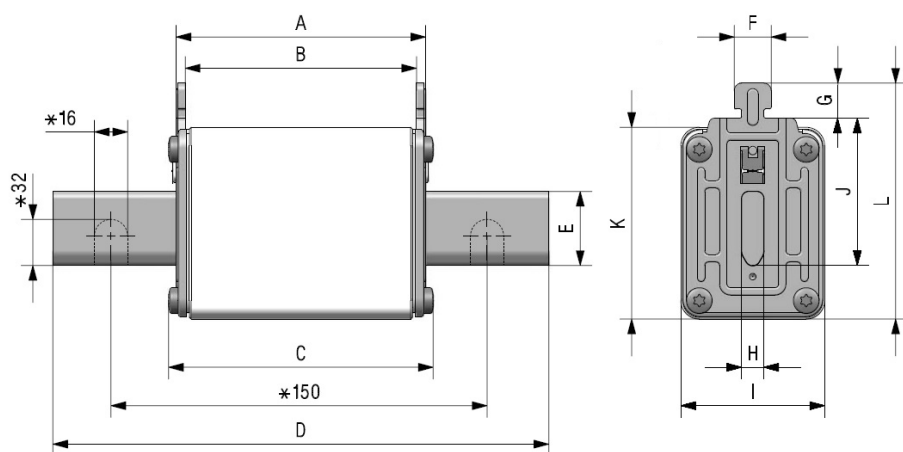


## Range

	<b>I<sub>n</sub></b> (A)	<b>REFERENCE</b>	<b>PACKING</b> Uni /BOX
<b>NH0</b>	6	<b>382110</b>	3/42
	10	<b>382115</b>	3/42
	16	<b>382120</b>	3/42
	20	<b>382125</b>	3/42
	25	<b>382130</b>	3/42
	32	<b>382135</b>	3/42
	35	<b>382140</b>	3/42
	40	<b>382145</b>	3/42
	50	<b>382150</b>	3/42
	63	<b>382155</b>	3/42
	80	<b>382160</b>	3/42
	100	<b>382165</b>	3/42

	<b>I<sub>n</sub></b> (A)	<b>REFERENCE</b>	<b>PACKING</b> Uni /BOX
<b>NH0S WITH STRIKER</b>	32	<b>396135</b>	3/30
	35	<b>396140</b>	3/30
	40	<b>396145</b>	3/30
	50	<b>396150</b>	3/30
	63	<b>396155</b>	3/30
	80	<b>396160</b>	3/30
	100	<b>396165</b>	3/30

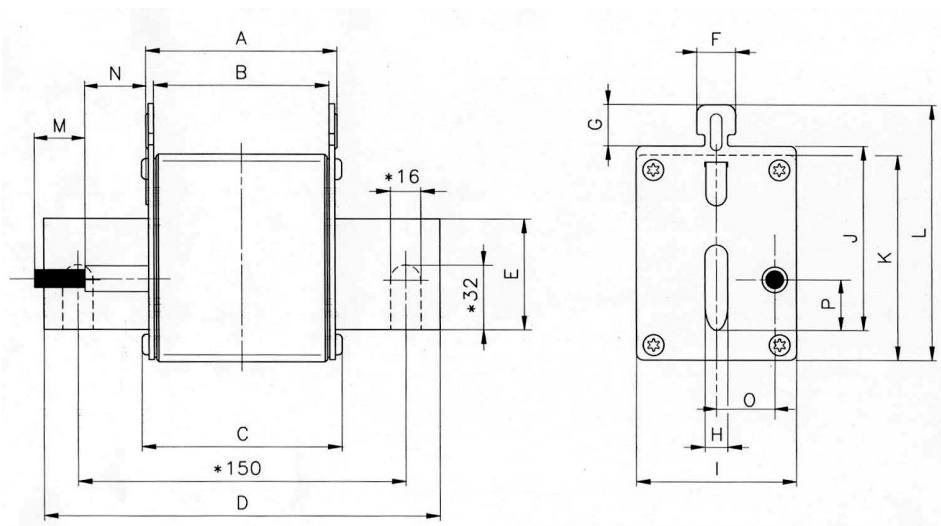
## Dimensions



\* Only for NH4 fuse links

A	B	C	D	E	F	G	H	I	J	K	L
66	60,5	66,5	125	15	10	9,5	6	29	35	47	59

**Weight** NH0: 250gr | NH0S: 310gr



\* Only for NH4 fuse links

A	B	C	D	E	F	G	H	I	J	K	L	M	N	O	P
66	62	66,5	125	15	10	9,5	6	39	35	47	59	15	29	14,5	14

**Weight** 320gr

## Technical data

Rated voltage	690V AC +5%
Rated current	6A...100A
Rated breaking capacity	80kA
Utilization category	gG
Rated frequency	42...62Hz
Storage temperature	-40°C ... 90°C
Operating temperature *	-40°C ... 80°C

\* For ambient temperatures higher than 25°C it is necessary to apply a derating in maximum current.

## Standards

IEC/EN 60269-1  
IEC/EN 60269-2  
RoHS Compliant



## Materials

Body	Steatite C221
Contact blades	Copper or brass (silver plated)
Plates	Aluminium
Screws	Zinc plated steel

## DC Application

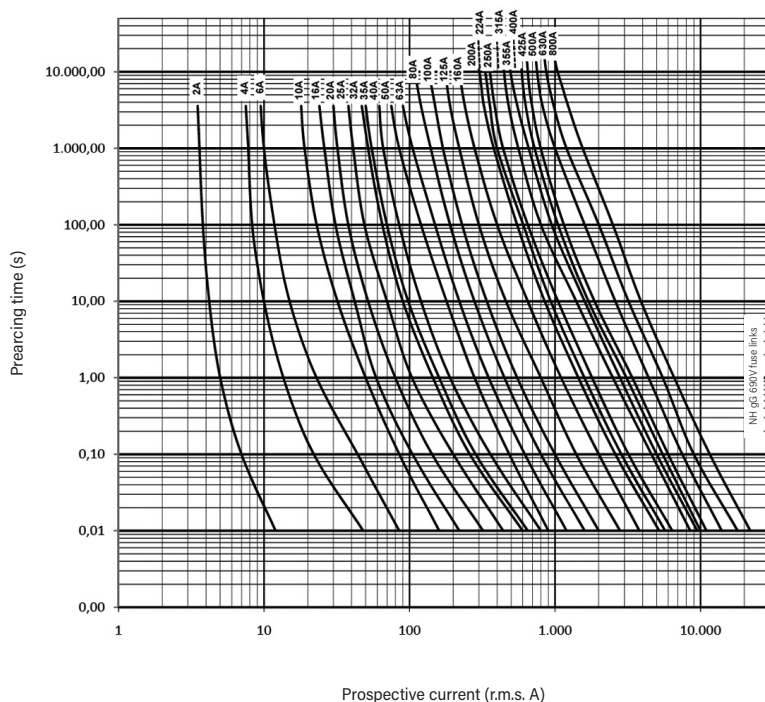
MAX DC VOLTAGE	DC BREAKING CAPACITY
440V DC	25kA

## Power dissipation

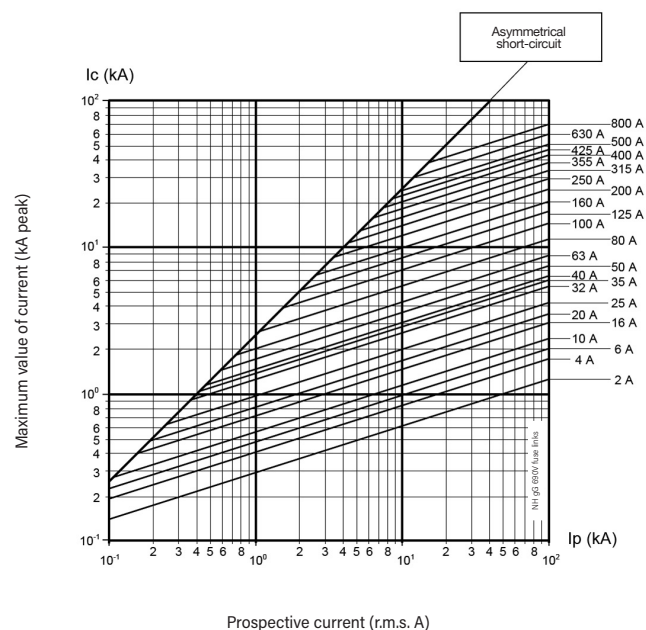
	I <sub>n</sub>	POWER DISSIPATION	PREARcing I <sub>t</sub>	TOTAL I <sub>t</sub> 230V	TOTAL I <sub>t</sub> 400V	TOTAL I <sub>t</sub> 500V
	(A)	(W)	≈ 4 ms (A <sup>2</sup> s)	(A <sup>2</sup> s)	(A <sup>2</sup> s)	(A <sup>2</sup> s)
NH0	6	1,3	103	191	223	300
	10	1,3	114	241	291	415
	16	2,8	255	542	654	935
	20	3,0	584	1240	1496	2140
	25	3,6	1120	2376	2868	4100
	32	4,5	3064	4840	5426	6740
	35	4,8	3517	5556	6229	7740
	40	5,2	4650	8001	8970	11150
	50	5,4	4800	8574	10310	14630
	63	6,9	6600	13805	16602	23571
	80	8,4	11700	24472	29430	41786
	100	10,2	21000	43925	52824	75000

\* Same data for STRIKER range (32A up to 100A)

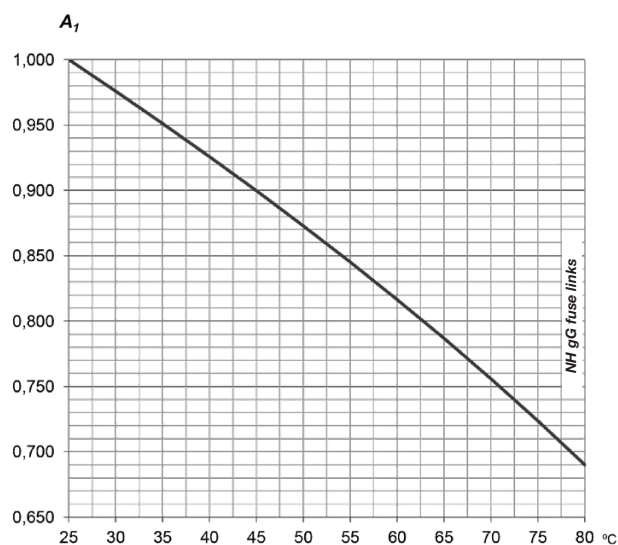
## t-I characteristics



## Cut-off characteristics



## Ambient temperature derating factor



$t_a$ (°C)	$A_1$
25	1,00
30	0,98
35	0,95
40	0,93
45	0,90
50	0,87
55	0,84
60	0,82
65	0,79
70	0,76
75	0,72
80	0,69





## PROTECTING THE WORLD



### HEAD OFFICE AND FACTORY

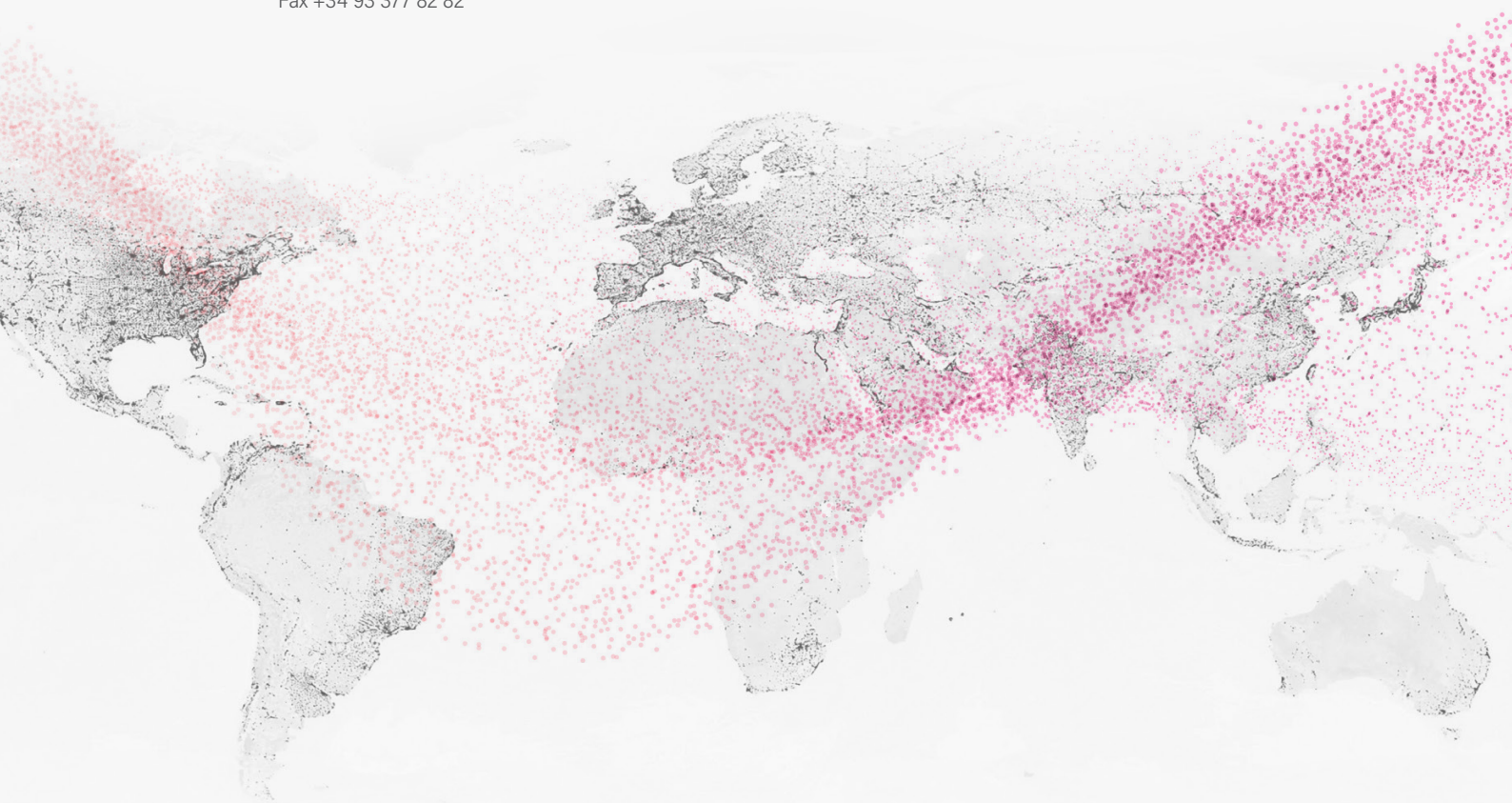
SILICI, 67-69  
08940 CORNELLA DE LLOBREGAT  
BARCELONA · SPAIN  
Tel. +34 93 377 85 85  
Fax +34 93 377 82 82

### INTERNATIONAL SALES

Tel. +34 93 475 08 64  
Fax +34 93 480 07 75  
export@dfelectric.es

### NATIONAL SALES

Tel. 93 475 08 64  
Fax 93 480 07 76  
comercial@dfelectric.es



dfelectric.es



According to the waste of electrical and electronic equipment directive, electrical material should not be part of the usual waste. This symbol alerts users that these products should be recycled according to local environmental waste disposal regulations.



The "electro technical expert" logo marked on the products included in this data sheet indicates that the installation of these products must be carried out by expert personnel with specialized knowledge.



To prevent electrical hazards, carry out the installation without voltage.



**Safety notice**  
Please capture the following QR code and read our safety notice carefully before installing our products.



The data reflected in this technical record are subject to the correct installation of the product in accordance with manufacturer's instructions, relevant installation standards and professional practices, maintained and used in applications for which they were made.

The products described in this document have been designed, developed and tested in accordance with specific standard. They are considered components that are integrated as part of installation, machine or equipment. The correct general operation of the referred product is responsibility of the manufacturer of the installation, machine or equipment.

DF ELECTRIC cannot guarantee the characteristics of an installation, machine or equipment that has been designed by a third party. Once a product has been selected, the user must verify that it is appropriate for its application, through the verifications and/or tests that it deems appropriate.

DF ELECTRIC retains the right to change the dimensions, specifications, materials or design of its products at any time with or without notice.

©2020 DF Electric. All rights reserved