

**HORUS**  
PHOTOVOLTAIC  
PROTECTION

# PHOTOVOLTAIC

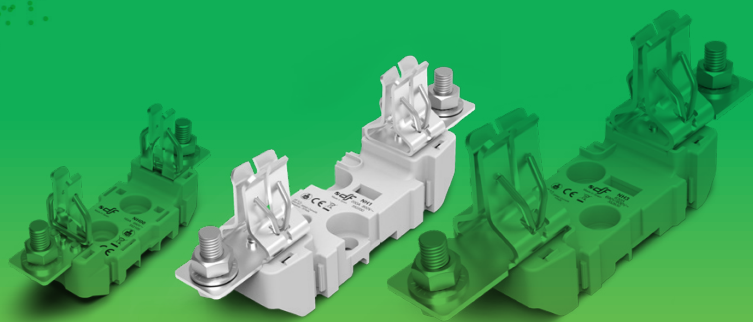
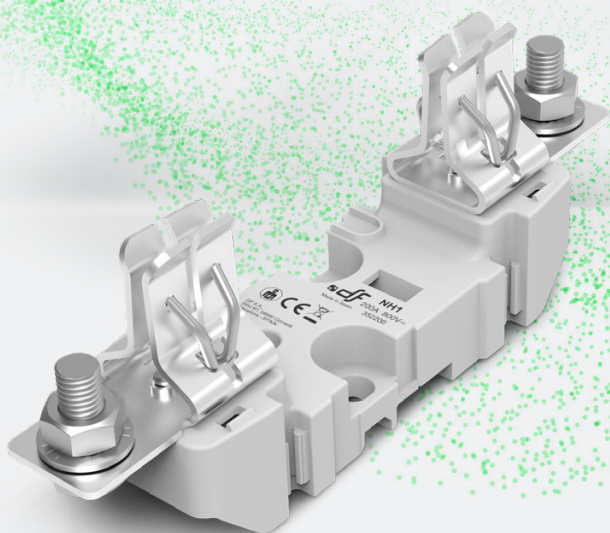
FUSE LINKS & FUSE HOLDERS FOR PHOTOVOLTAIC APPLICATIONS

## NH ST 800V AC

bases for NH fuse links  
INVERTER PROTECTION

ST

NH1

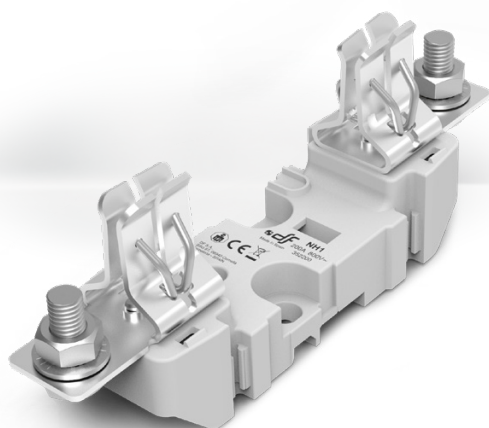


NH00

NH1

NH3

**PROTECTING  
THE WORLD**



## Bases for NH fuse links

### Photovoltaic applications 800V AC

### Inverter protection

Manufactured with a high quality materials

- Silver plated copper contacts.
- Plastic materials with high temperature resistance and self-extinguishable.
- All the materials are according to the European Directive RoHS (Restriction of the use of certain hazardous substances in electrical material).



For DIN rail mounting or with screw fixing.

Single-phase or three-pole type.

Connection by screws.

Contacts with spring in order to obtain an optimum operation.

Wide range of accessories that enables IP20 protection index: contact covers, fuse link covers, partition walls.

Multi-pole units can be made with connection accessories.

Manufactured according IEC, EN, VDE and DIN standards.

## Accessories

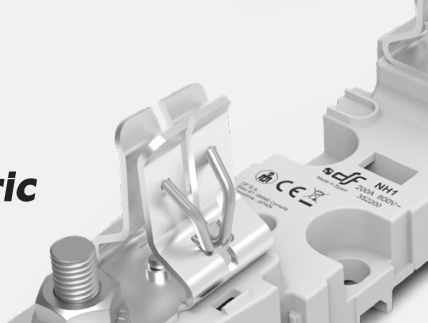
REFERENCE	DESCRIPTION	PACKING Uni./BOX
<b>326200</b>	PARTITION WALL FIXED TO SEPARATORS	2
<b>326201</b>	PARTITION WALL DIRECTLY FIXED TO THE BODY	2
<b>325250</b>	SEPARATOR MULTIPOLE UNITS SEPARATOR	2
<b>325005</b>	TERMINAL COVER	6
<b>325018</b>	FUSE LINKS COVER	3
<b>357010</b>	MICROSWITCH	1/12
<b>340001</b>	FUSE PULLER	1

### TERMINALS

	CROSS SECTION (mm <sup>2</sup> )	CABLE	
<b>343400</b>	150/16	1	3
<b>344400</b>	150/25-16	2	3

## Range

REFERENCE	POLES	FIXING	CONNECTION	PACKING Uni./BOX
<b>352200</b>	1P	DIN RAIL/SCREW	SCREW	3
<b>353200</b>	3P	DIN RAIL/SCREW	SCREW	1



## Technical data

Rated current	200A	
Rated voltage	800V AC	
Rated power dissipation	25W	
Protection index	IP00 / IP20	
Ambient temperature of service	-20°C ... 70°C	
Storage temperature	-40°C ... 80°C	
Correction of the admissible current in function of the temperature	20° C	1
	30° C	0,95
	40° C	0,90
	50° C	0,80
	60° C	0,70
	70° C	0,60



DO NOT OPERATE UNDER LOAD

## Standards

IEC/EN 60269-1  
IEC/EN 60269-2  
DIN 43620

## Application characteristics

### Mounting

DIN/EN Standard  
Rail DIN 46277/1-3 (EN50022)  
Screws

### Connecting wire

M10

### Maximum tightening torque on terminals

32 Nm

### Maximum tightening torque fuse holder fixation with screws

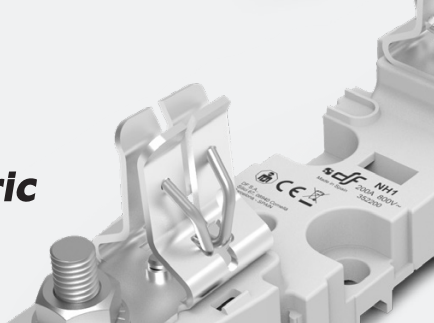
12 Nm

### Multipolar assembly

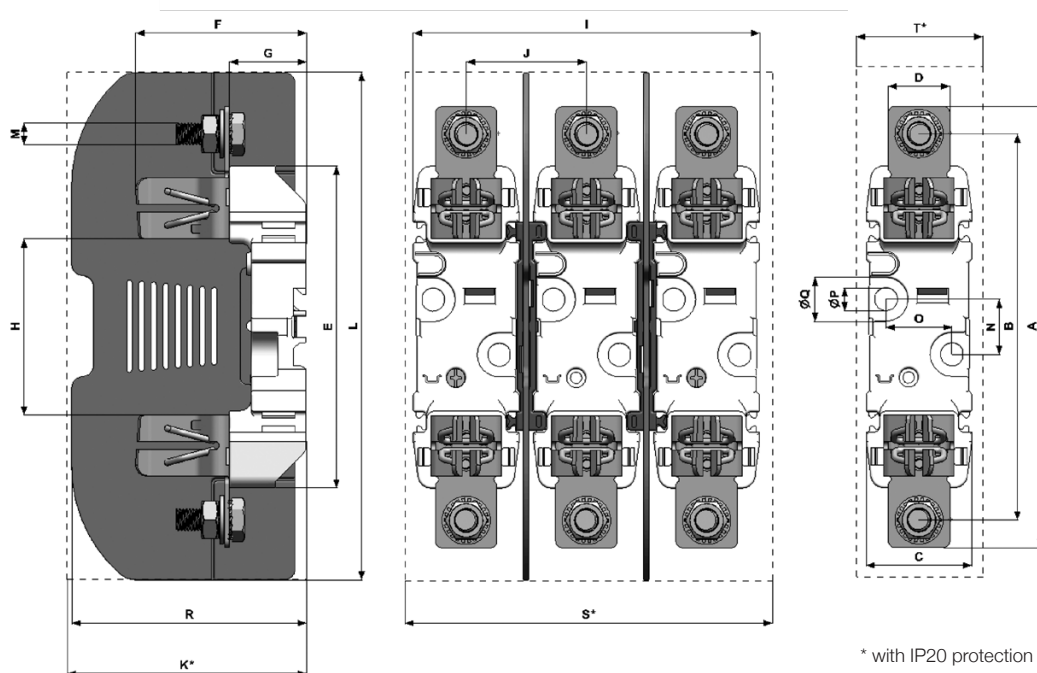
► [FIG. 1](#)

## Materials

Contacts	Silver plated copper
Body	Thermoplastic, high resistance to temperature Flammability: (UL94) V0 Glow wire test: (IEC-60695) 960°C
Partition walls	Thermoplastic, high resistance to temperature Flammability: (UL94) V0 – 1,6mm Glow wire test: (IEC-60695) 960°C – 1,6mm
Separators	Thermoplastic, high resistance to temperature Flammability: (UL94) V0 – 1,6mm Glow wire test: (IEC-60695) 960°C – 1,6mm
Terminal covers	Thermoplastic, high resistance to temperature Flammability: (UL94) V0 – 1,6mm Glow wire test: (IEC-60695) 960°C – 1,6mm
Fuse links covers	Thermoplastic, high resistance to temperature Flammability: (UL94) V2 Glow wire test: (IEC-60695) 850°C
Accessory terminals	Tin plated brass Zinc plated steel screws



## Dimensions



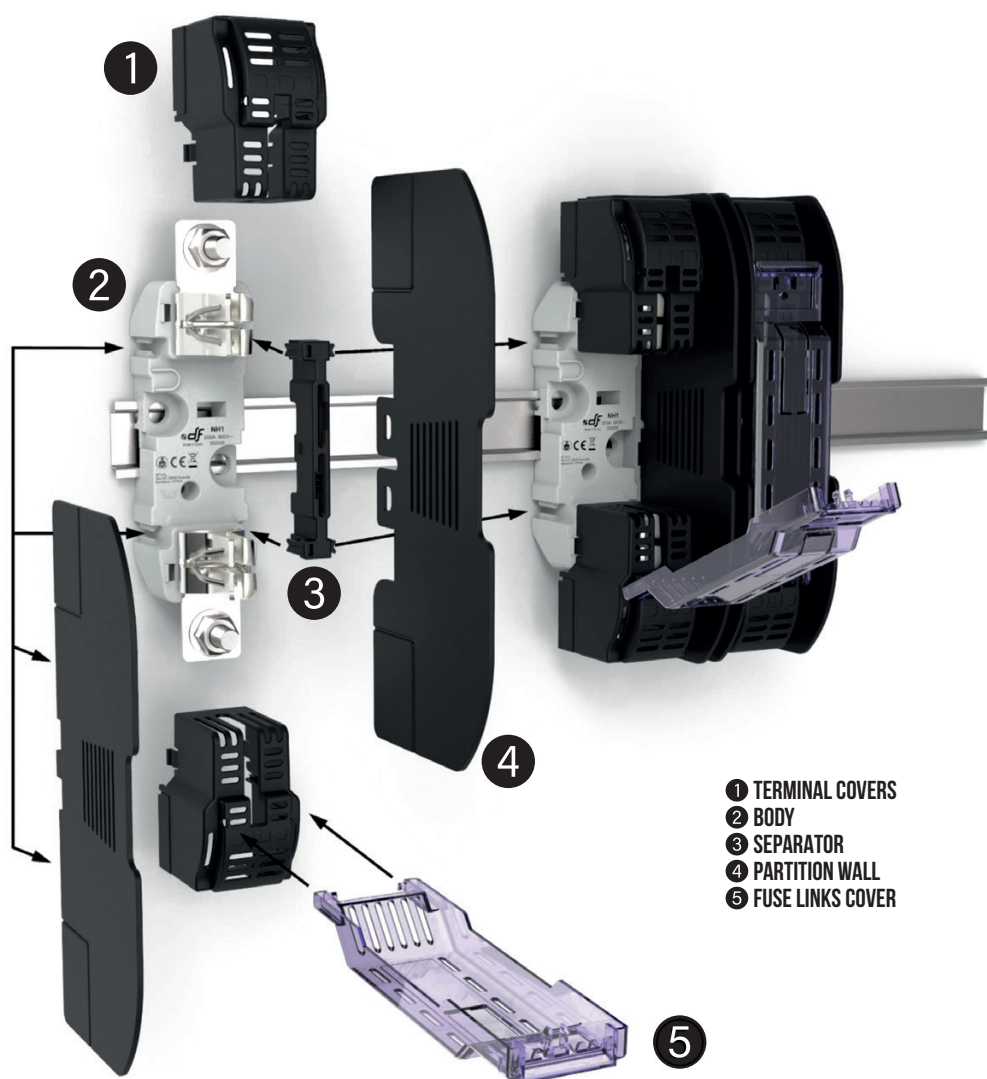
A	B	C	D	E	F	G	H	I	J	K	L	M	N	O	P	Q	R	S	T
200	175	48	28	146	77,5	35	80	169,5	60,8	107	230	M10	25	30	10,5	20	107	175	54

## Weight

1P	320gr
3P	1,1kg

Weight without packing

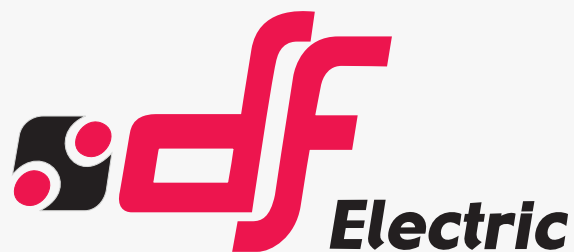
## Accessories assembly



- 1 TERMINAL COVERS
- 2 BODY
- 3 SEPARATOR
- 4 PARTITION WALL
- 5 FUSE LINKS COVER

The fuse holder allows using simultaneously a microswitch for NH fuse links and IP20 protection accessories





# PROTECTING THE WORLD

## HEAD OFFICE AND FACTORY

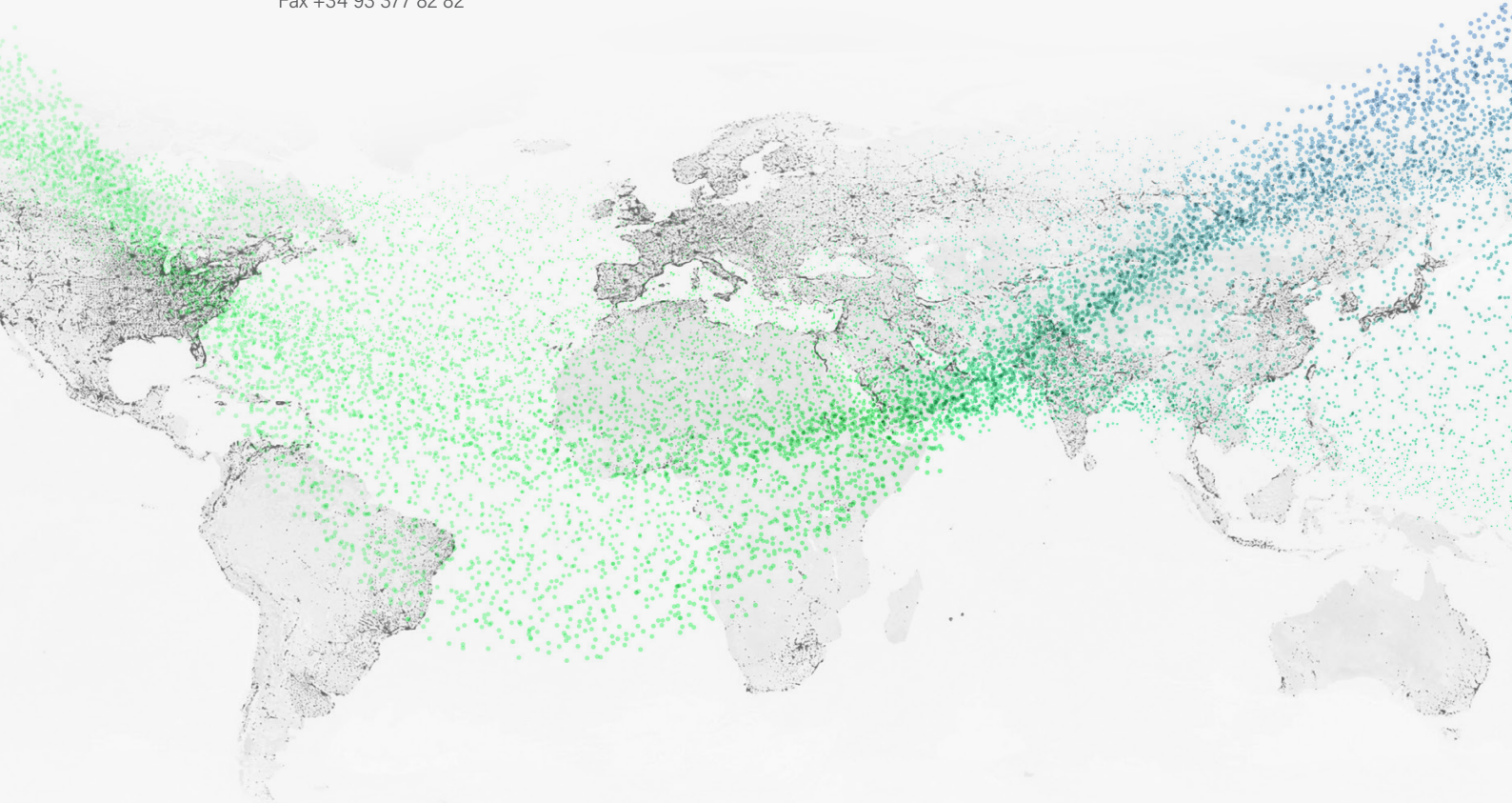
SILICI, 67-69  
08940 CORNELLA DE LLOBREGAT  
BARCELONA · SPAIN  
Tel. +34 93 377 85 85  
Fax +34 93 377 82 82

## INTERNATIONAL SALES

Tel. +34 93 475 08 64  
Fax +34 93 480 07 75  
export@dfelectric.es

## NATIONAL SALES

Tel. 93 475 08 64  
Fax 93 480 07 76  
comercial@dfelectric.es



dfelectric.es



According to the waste of electrical and electronic equipment directive, electrical material should not be part of the usual waste. This symbol alerts users that these products should be recycled according to local environmental waste disposal regulations.



The "electro technical expert" logo marked on the products included in this data sheet indicates that the installation of these products must be carried out by expert personnel with specialized knowledge.



To prevent electrical hazards, carry out the installation without voltage.



**Safety notice**  
Please capture the following QR code and read our safety notice carefully before installing our products.



The data reflected in this technical record are subject to the correct installation of the product in accordance with manufacturer's instructions, relevant installation standards and professional practices, maintained and used in applications for which they were made.

The products described in this document have been designed, developed and tested in accordance with specific standard. They are considered components that are integrated as part of installation, machine or equipment. The correct general operation of the referred product is responsibility of the manufacturer of the installation, machine or equipment.

DF ELECTRIC cannot guarantee the characteristics of an installation, machine or equipment that has been designed by a third party. Once a product has been selected, the user must verify that it is appropriate for its application, through the verifications and/or tests that it deems appropriate.

DF ELECTRIC retains the right to change the dimensions, specifications, materials or design of its products at any time with or without notice.

©2019 DF Electric. All rights reserved