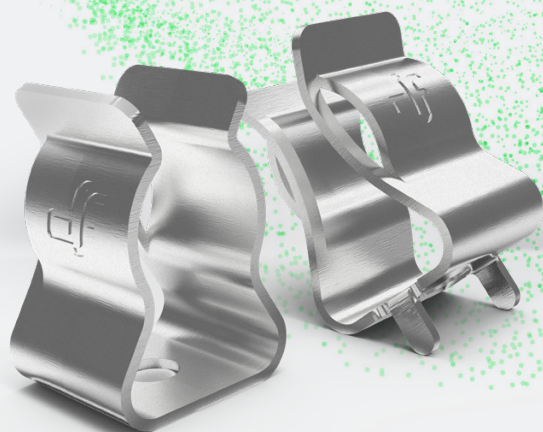


HORUS
PHOTOVOLTAIC
PROTECTION



**PROTECTING
THE WORLD**

PHOTOVOLTAIC

FUSE LINKS & FUSE HOLDERS FOR PHOTOVOLTAIC APPLICATIONS

Clip contact

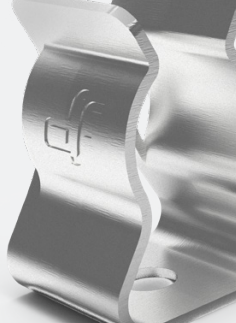
for Ø10 fuse links

PCB AND SCREW FIXATION

CYL

10x38

10x85



Clip contact

for Ø10 fuse links



PHOTOVOLTAIC

HORUS
PHOTOVOLTAIC
PROTECTION



Clip contact for Ø10 fuse links

Screw fixation and PCB versions.

Manufactured in tinned bronze.

All materials are according to the European Directive RoHS (Restriction of the use of certain hazardous substances in electrical material).



Technical data

Maximum nominal current	25A
Operating voltage	Depends on proper installation conditions and the respect of the insulation distances according to IEC 60664-1 standard
Rated power dissipation	4W

Range

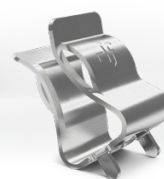
REFERENCE	DESCRIPTION	PACKING Uni /BOX
482001	Ø10 CLIP CONTACT SCREW FIXATION	50/200
482002	Ø10 CLIP CONTACT FOR PCB	50/200

Dimensions

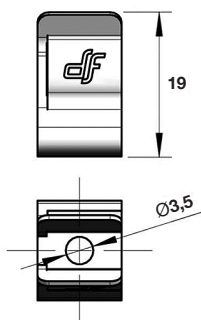
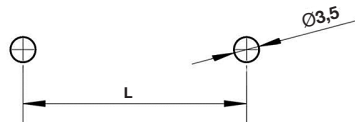
SCREW FIXATION



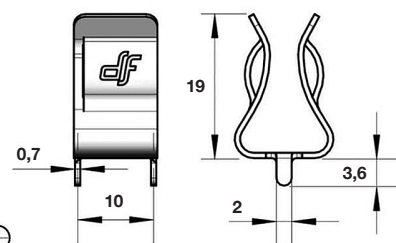
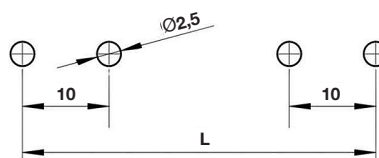
PCB

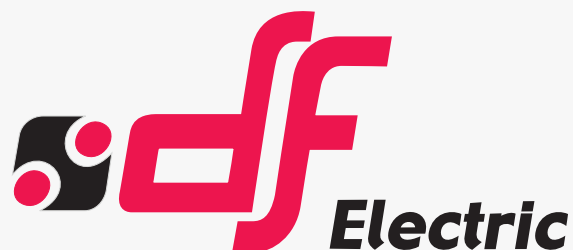


	L (mm)
10x38	32
10x85	79,6



	L (mm)
10x38	42
10x85	89,6





PROTECTING THE WORLD

HEAD OFFICE AND FACTORY

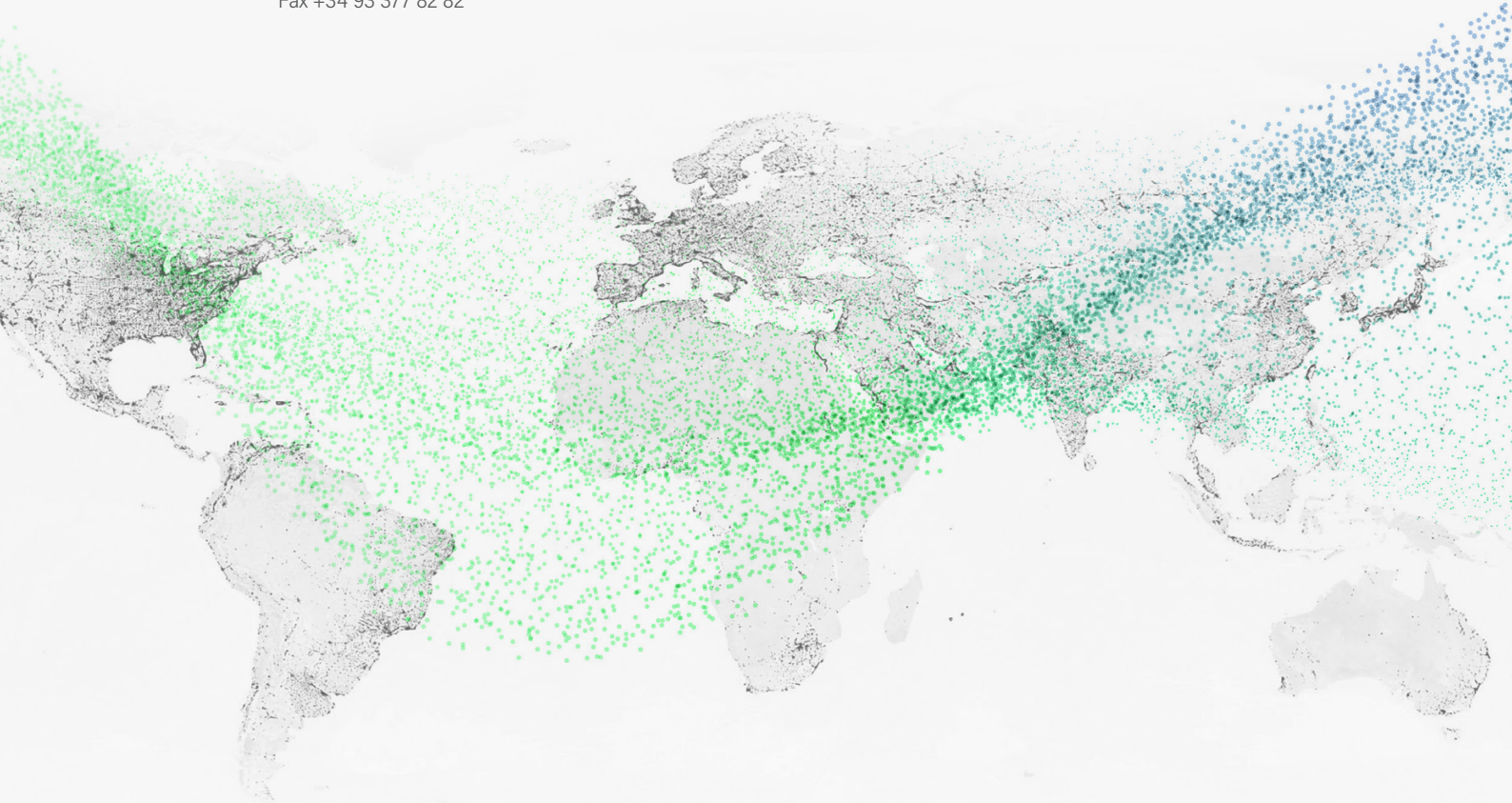
SILICI, 67-69
08940 CORNELLA DE LLOBREGAT
BARCELONA · SPAIN
Tel. +34 93 377 85 85
Fax +34 93 377 82 82

INTERNATIONAL SALES

Tel. +34 93 475 08 64
Fax +34 93 480 07 75
export@dfelectric.es

NATIONAL SALES

Tel. 93 475 08 64
Fax 93 480 07 76
comercial@dfelectric.es



dfelectric.es



According to the waste of electrical and electronic equipment directive, electrical material should not be part of the usual waste. This symbol alerts users that these products should be recycled according to local environmental waste disposal regulations.



The "electro technical expert" logo marked on the products included in this data sheet indicates that the installation of these products must be carried out by expert personnel with specialized knowledge.



To prevent electrical hazards, carry out the installation without voltage.



Safety notice
Please capture the following QR code and read our safety notice carefully before installing our products.



The data reflected in this technical record are subject to the correct installation of the product in accordance with manufacturer's instructions, relevant installation standards and professional practices, maintained and used in applications for which they were made.

The products described in this document have been designed, developed and tested in accordance with specific standard. They are considered components that are integrated as part of installation, machine or equipment. The correct general operation of the referred product is responsibility of the manufacturer of the installation, machine or equipment.

DF ELECTRIC cannot guarantee the characteristics of an installation, machine or equipment that has been designed by a third party. Once a product has been selected, the user must verify that it is appropriate for its application, through the verifications and/or tests that it deems appropriate.

DF ELECTRIC retains the right to change the dimensions, specifications, materials or design of its products at any time with or without notice.

©2021 DF Electric. All rights reserved