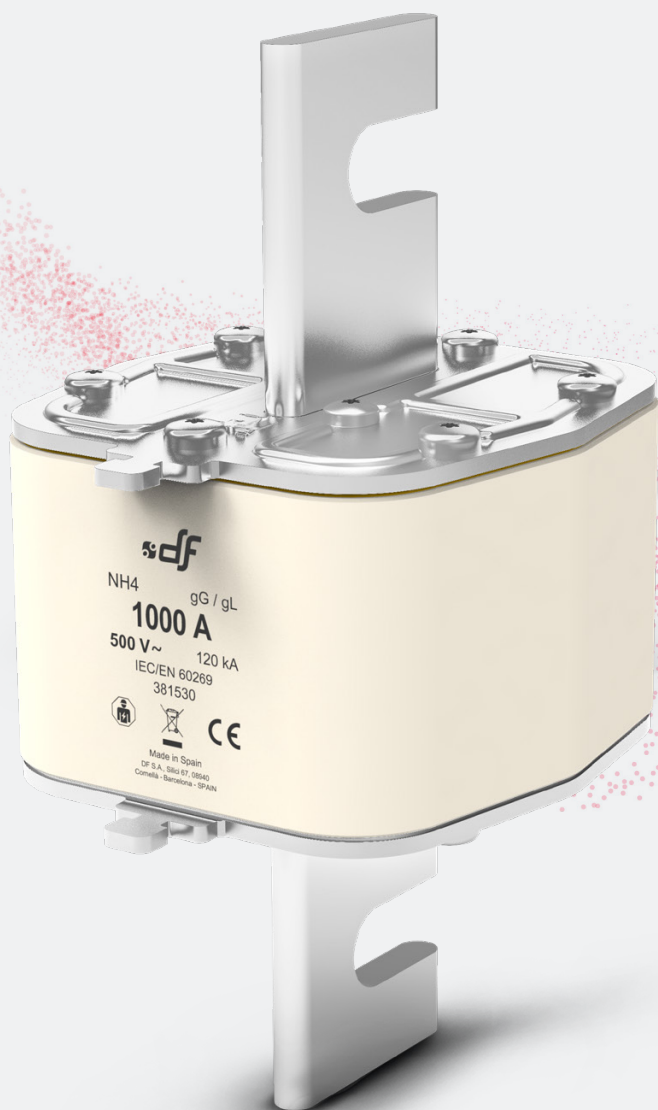


NH KNIFE-BLADE

FUSE LINKS & FUSE BASES



gG
NH 500V
fuse links



**PROTECTING
THE WORLD**



Knife type NH gG 500V fuse links with top indicator

These high breaking capacity fuse-links are intended for protection of power lines and equipment, against overloads and short-circuits with rated voltages up to 500V AC (+10%).

The rated breaking capacity is 120 kA.

Compact versions in low rated currents of every size.

The range comprises the following fuse links:

→ Size NH4 gG 500V 315A to 1250A

→ Size NH4 with striker gG 500V 315A to 1250A

Manufactured with ceramic body with high withstand to internal pressure and thermal shock, that allows a high breaking capacity. Knife contacts are made of silver plated copper or brass.

They are manufactured according to IEC/EN60269 Standards and comply with RoHS directive.



Range

	In (A)	REFERENCE	PACKING Uni /BOX
NH4	315	381505	1/6
	400	381510	1/6
	500	381515	1/6
	630	381520	1/6
	800	381525	1/6
	900	381527	1/6
	1000	381530	1/6
	1250*	381535	1/6

* Overrating fuse links

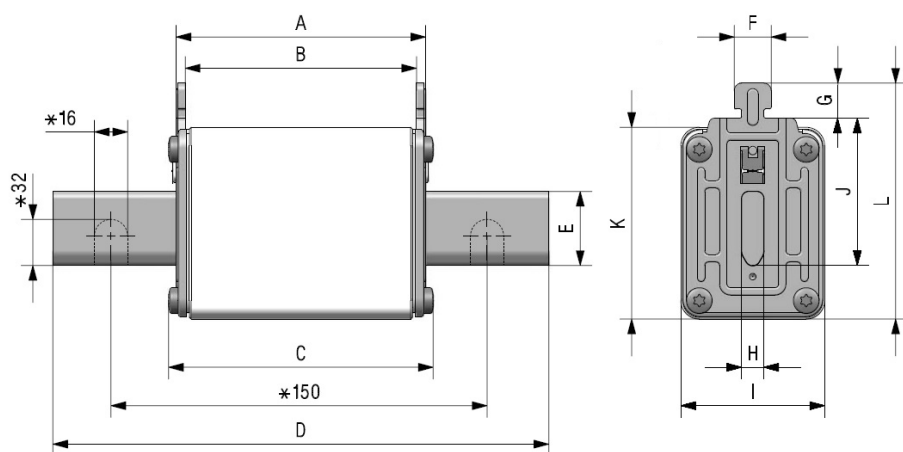
Range

	In (A)	REFERENCE	PACKING Uni /BOX
NH4 WITH STRIKER	315	395505	1/6
	400	395510	1/6
	500	395515	1/6
	630	395520	1/6
	800	395525	1/6
	1000	395530	1/6
	1250*	395535	1/6

* Overrating fuse links



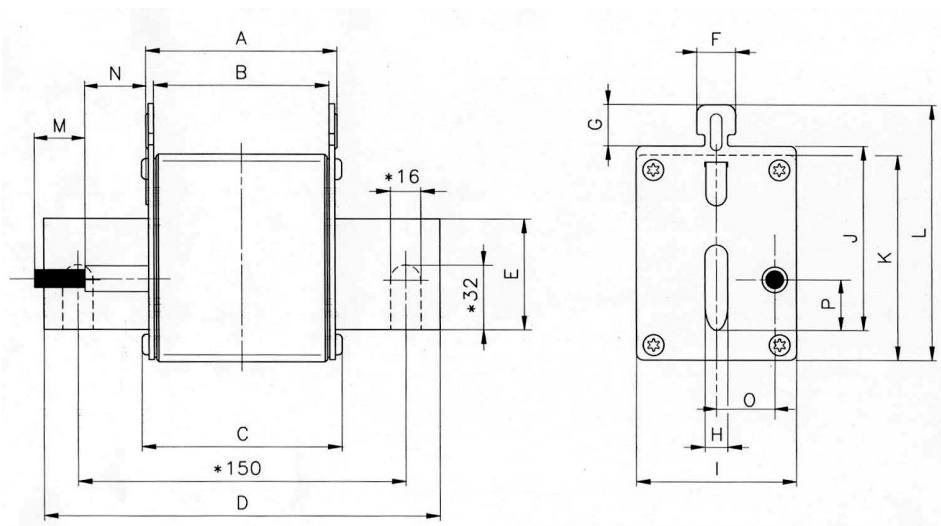
Dimensions



* Only for NH4 fuse links

A	B	C	D	E	F	G	H	I	J	K	L
68	62	76	200	50	10	10	8	102	87	105	120

Weight 2,38kg



* Only for NH4 fuse links

A	B	C	D	E	F	G	H	I	J	K	L	M	N	O	P
68	62	76	200	50	10	10	8	102	87	105	120	15	39	27,5	14,5

Weight 2,38kg



Technical data

Rated voltage	500V AC +10%
Rated current	315A...1250A
Rated breaking capacity	120kA
Utilization category	gG
Rated frequency	42...62Hz
Storage temperature	-40°C ... 90°C
Operating temperature *	-40°C ... 80°C

* For ambient temperatures higher than 25°C it is necessary to apply a derating in maximum current.

Standards

IEC/EN 60269-1
IEC/EN 60269-2
RoHS Compliant



Materials

Body	Steatite C221
Contact blades	Copper or brass (silver plated)
Plates	Aluminium
Screws	Zinc plated steel

DC Application

RATED CURRENT	MAX DC VOLTAGE	DC BREAKING CAPACITY
315A...1000A	250V DC	50kA
1250A	80V DC	50kA

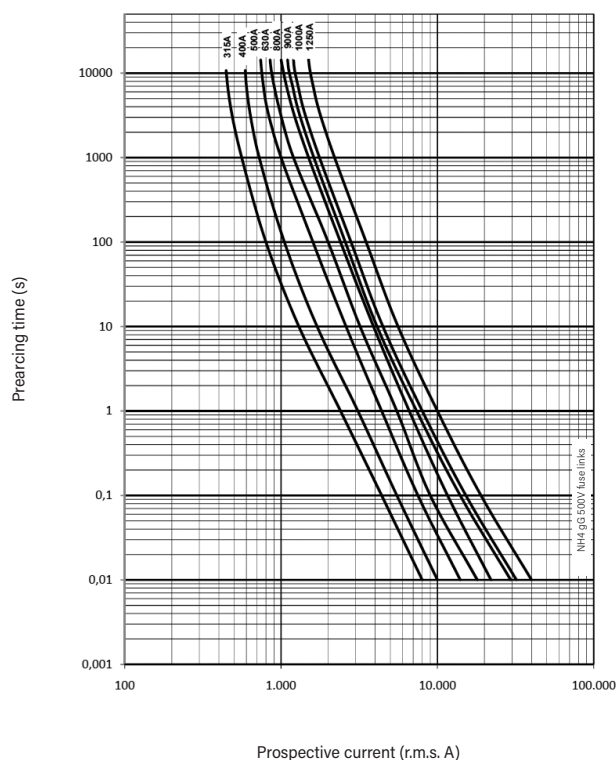
Power dissipation

I _n	POWER DISSIPATION	PREARcing I _t	TOTAL I _t 230V	TOTAL I _t 400V	TOTAL I _t 500V
(A)	(W)	≈ 4 ms (A ² s)	(A ² s)	(A ² s)	(A ² s)
315	26,1	269400	363200	452900	660000
400	32,7	471400	635400	792400	1154800
500	37,0	851400	1147800	1431300	1085900
630	47,0	1609600	2169900	2706000	3943600
800	68,0	2248200	3030700	3779400	5507900
900	76,0	3405500	4590900	5725100	8343400
1000	80,0	4310000	5810500	7246000	10560000
1250	108	7541100	10166200	12677700	18475700

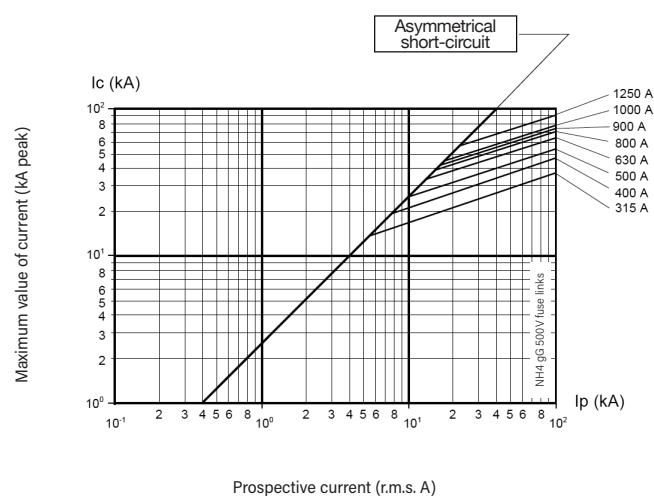
* Same data for STRIKER range



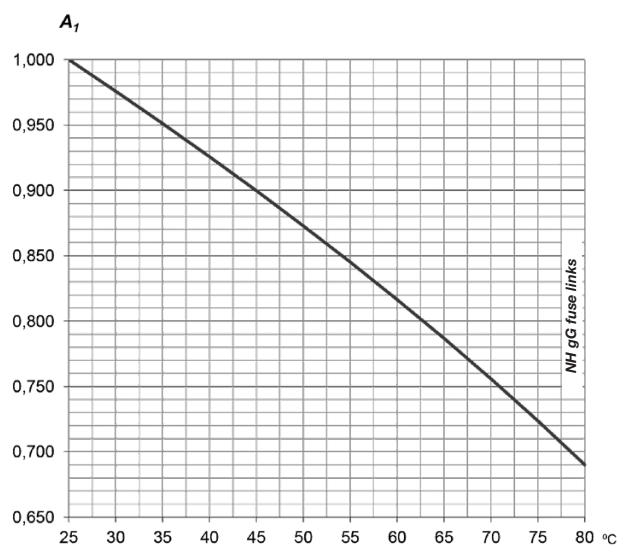
t-I characteristics



Cut-off characteristics



Ambient temperature derating factor



t_a (°C)	A_1
25	1,00
30	0,98
35	0,95
40	0,93
45	0,90
50	0,87
55	0,84
60	0,82
65	0,79
70	0,76
75	0,72
80	0,69



PROTECTING THE WORLD

HEAD OFFICE AND FACTORY

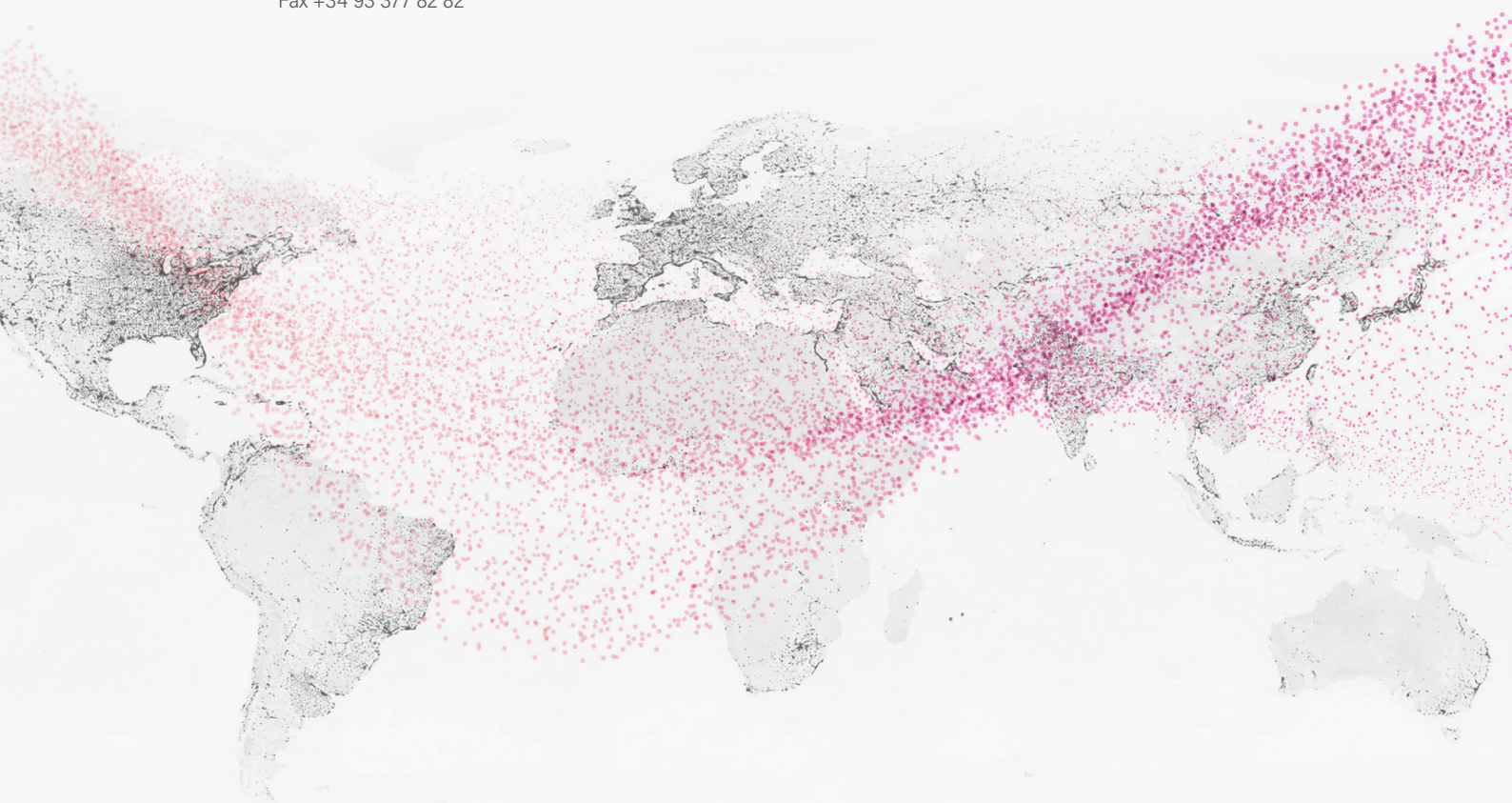
SILICI, 67-69
08940 CORNELLA DE LLOBREGAT
BARCELONA · SPAIN
Tel. +34 93 377 85 85
Fax +34 93 377 82 82

INTERNATIONAL SALES

Tel. +34 93 475 08 64
Fax +34 93 480 07 75
export@dfelectric.es

NATIONAL SALES

Tel. 93 475 08 64
Fax 93 480 07 76
comercial@dfelectric.es



dfelectric.es



According to the waste of electrical and electronic equipment directive, electrical material should not be part of the usual waste. This symbol alerts users that these products should be recycled according to local environmental waste disposal regulations.



The "electro technical expert" logo marked on the products included in this data sheet indicates that the installation of these products must be carried out by expert personnel with specialized knowledge.



To prevent electrical hazards, carry out the installation without voltage.



Safety notice
Please capture the following QR code and read our safety notice carefully before installing our products.



The data reflected in this technical record are subject to the correct installation of the product in accordance with manufacturer's instructions, relevant installation standards and professional practices, maintained and used in applications for which they were made.

The products described in this document have been designed, developed and tested in accordance with specific standard. They are considered components that are integrated as part of installation, machine or equipment. The correct general operation of the referred product is responsibility of the manufacturer of the installation, machine or equipment.

DF ELECTRIC cannot guarantee the characteristics of an installation, machine or equipment that has been designed by a third party. Once a product has been selected, the user must verify that it is appropriate for its application, through the verifications and/or tests that it deems appropriate.

DF ELECTRIC retains the right to change the dimensions, specifications, materials or design of its products at any time with or without notice.

©2020 DF Electric. All rights reserved