

# NH KNIFE-BLADE

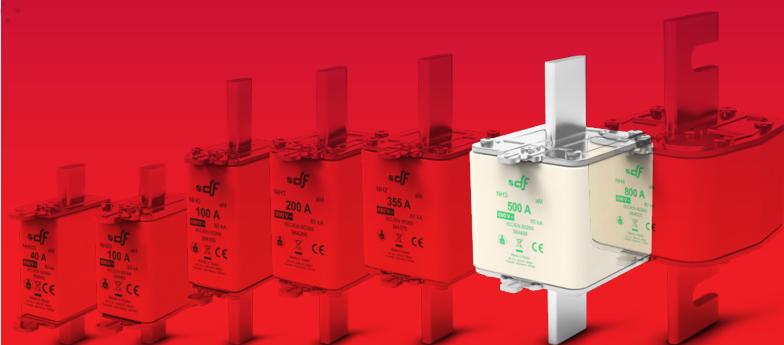
FUSE LINKS & FUSE BASES



## aM

## NH 500V/690V

fuse links



## PROTECTING THE WORLD



#### RATED VOLTAGE

690V AC  
500V AC

#### RATED CURRENT

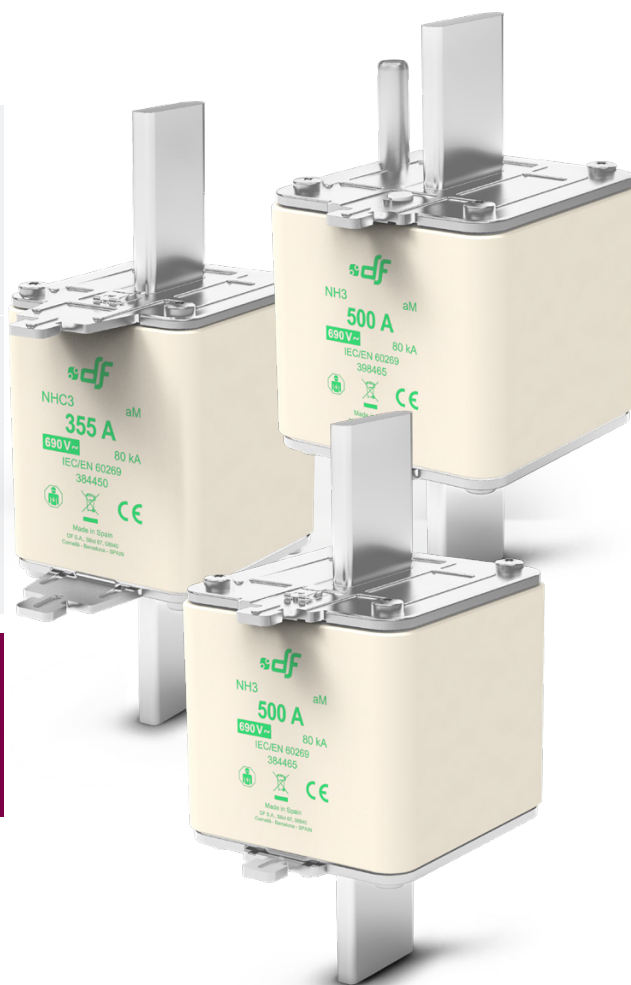
315A...630A

#### BREAKING CAPACITY

80kA @ 690V  
120kA @ 500V

#### STANDARDS

IEC/EN 60269-1  
IEC/EN 60269-2



## Knife type NH aM 500V/690V fuse links with top indicator

These high breaking capacity fuse-links are intended for short circuit protection in motors, transformer and other load with high inrush currents, with rated voltages up to 690V (+5%).

The rated breaking capacity is 80kA at 690V or 120kA at 500V. Excellent protection of switchgear (contactor, thermal switch) due to the good current limiting capability and low  $I^2t$  values. These fuse links must be associated to an overload device protection (thermal switch).

Compact versions in low rated currents of every size.

The range comprises the following fuse links:

- Size NHC3 aM 690V 315A and 355A
- Size NH3 aM 500V/690V 400A to 630A
- Size NH3 with striker aM 500V/690V 400A to 630A

Manufactured with ceramic body with high withstand to internal pressure and thermal shock, that allows a high breaking capacity. Knife contacts are made of silver plated copper or brass.

They are manufactured according to IEC/EN60269 Standards and comply with RoHS directive.

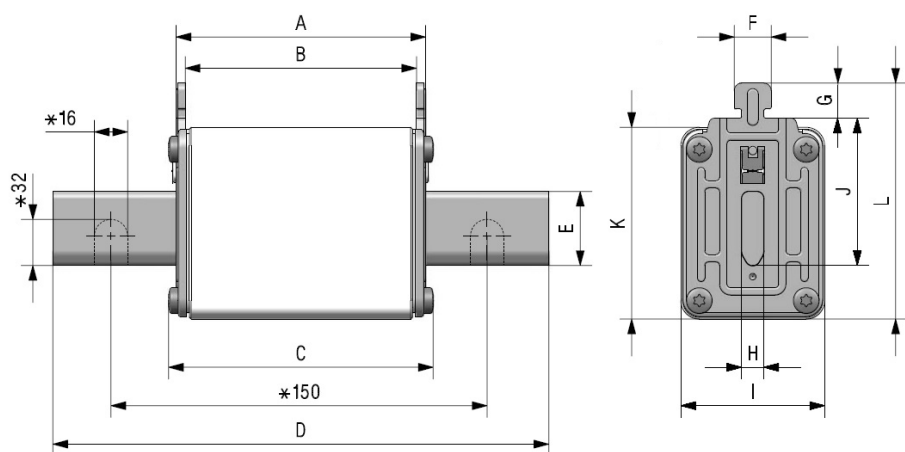


## Range

	U <sub>n</sub>	BREAKING CAPACITY	I <sub>n</sub>	REFERENCE	PACKING
			(A)		Uni /BOX
<b>NHC3</b>	690V	80kA	315	<b>384445</b>	3/18
			355	<b>384450</b>	3/18
			400	<b>384455</b>	3/18
<b>NH3</b>	690V	80kA	425	<b>384455</b>	3/18
			500	<b>384465</b>	3/18
	500V	120kA	630	<b>383470</b>	3/18

	U <sub>n</sub>	BREAKING CAPACITY	I <sub>n</sub>	REFERENCE	PACKING
			(A)		Uni /BOX
<b>NH3 WITH STRIKER</b>	690V	80kA	400	<b>398455</b>	3/18
			425	<b>398460</b>	3/18
			500	<b>398465</b>	3/18
	500V	120kA	630	<b>397470</b>	3/18

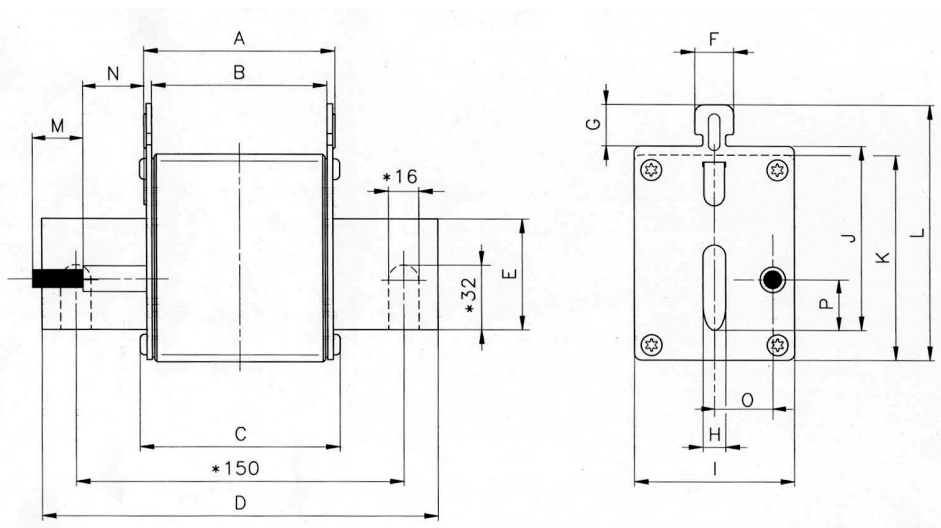
## Dimensions



\* Only for NH4 fuse links

	A	B	C	D	E	F	G	H	I	J	K	L
<b>NHC3</b>	68	62	71,5	150	25	10	9,5	6	53	60	60	84
<b>NH3</b>	68	62	73	150	32	10	9,5	6	70	60	75	87

**Weight** NHC3: 630gr | NH3: 1,02kg



\* Only for NH4 fuse links

A	B	C	D	E	F	G	H	I	J	K	L	M	N	O	P
68	62	73	150	32	10	9,5	6	70	60	75	87	15	28	24	14,5

**Weight** 1,02kg



## Technical data

<b>Rated voltage</b>	690V +5% 500V +10%
<b>Rated current</b>	315A...630A
<b>Rated breaking capacity</b>	80kA @690V 120kA @500V
<b>Utilization category</b>	aM
<b>Rated frequency</b>	42...62Hz
<b>Storage temperature</b>	-40°C ... 90°C
<b>Operating temperature *</b>	-40°C ... 80°C

\* For ambient temperatures higher than 25°C it is necessary to apply a derating in maximum current.

IEC/EN 60269-1  
IEC/EN 60269-2  
RoHS Compliant



## Standards

## Materials

<b>Body</b>	Steatite C221
<b>Contact blades</b>	Copper or brass (silver plated)
<b>Plates</b>	Aluminium
<b>Screws</b>	Zinc plated steel

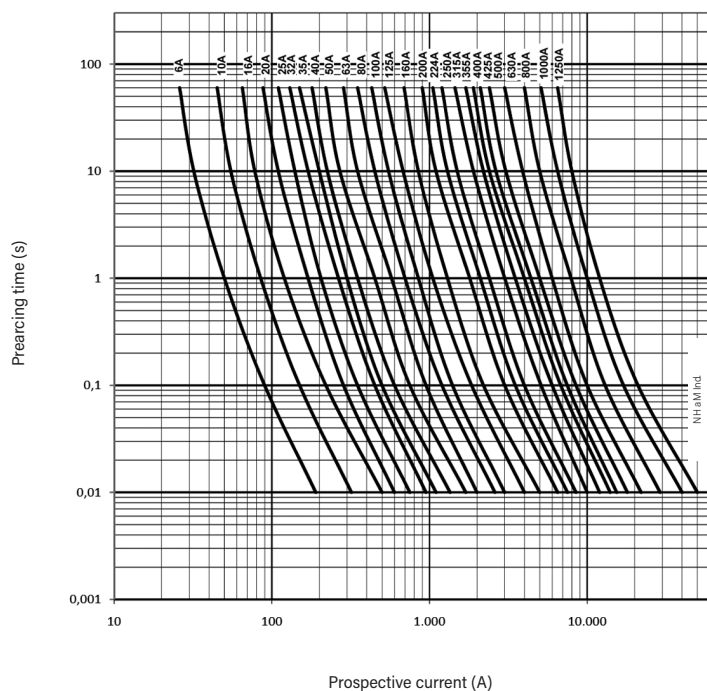
## Power dissipation

	$I_n$ (A)	POWER DISSIPATION (W)	PREARCING $I^2t$ $\approx 4 \text{ ms (A}^2\text{s)}$	TOTAL $I^2t$ 230V (A <sup>2</sup> s)	TOTAL $I^2t$ 400V (A <sup>2</sup> s)	TOTAL $I^2t$ 500V (A <sup>2</sup> s)
<b>NHC3</b>	<b>315</b>	20,5	463000	871728	1021130	1379149
	<b>355</b>	24,1	470000	884908	1036568	1400000
<b>NH3</b>	<b>400</b>	25,5	502000	1080129	1308183	1882500
	<b>425</b>	28,5	582000	1252261	1516658	2182500
	<b>500</b>	34,5	760000	1635254	1980516	2850000
	<b>630</b>	45,9	1423000	3061799	3708255	5336250

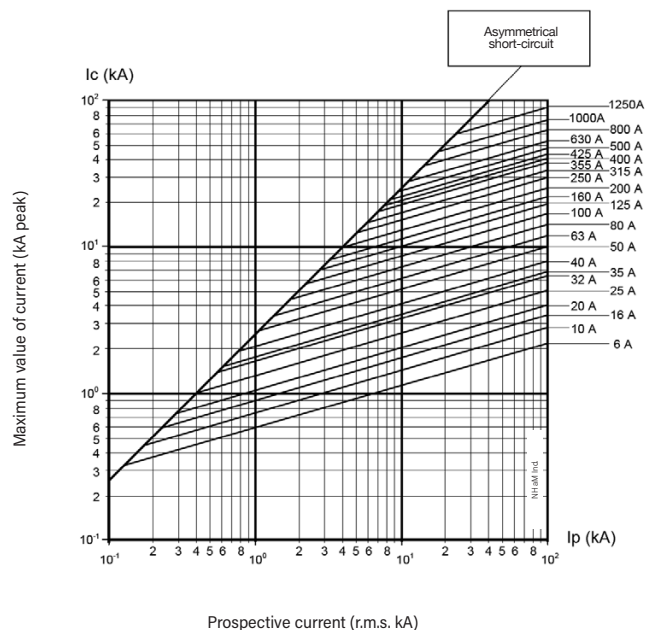
\* Same data for STRIKER range (400A up to 630A)



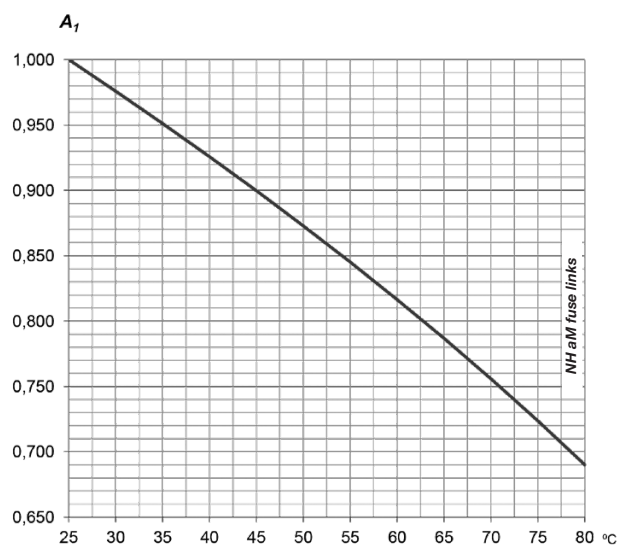
## t-I characteristics



## Cut-off characteristics

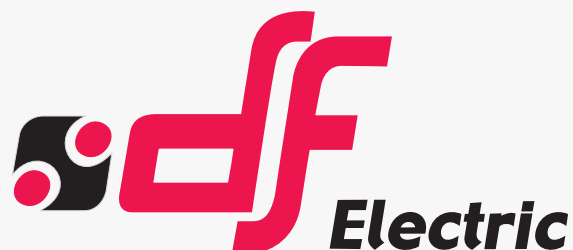


## Ambient temperature derating factor



$t_a$ (°C)	$A_1$
25	1,00
30	0,98
35	0,95
40	0,93
45	0,90
50	0,87
55	0,84
60	0,82
65	0,79
70	0,76
75	0,72
80	0,69





# PROTECTING THE WORLD

## HEAD OFFICE AND FACTORY

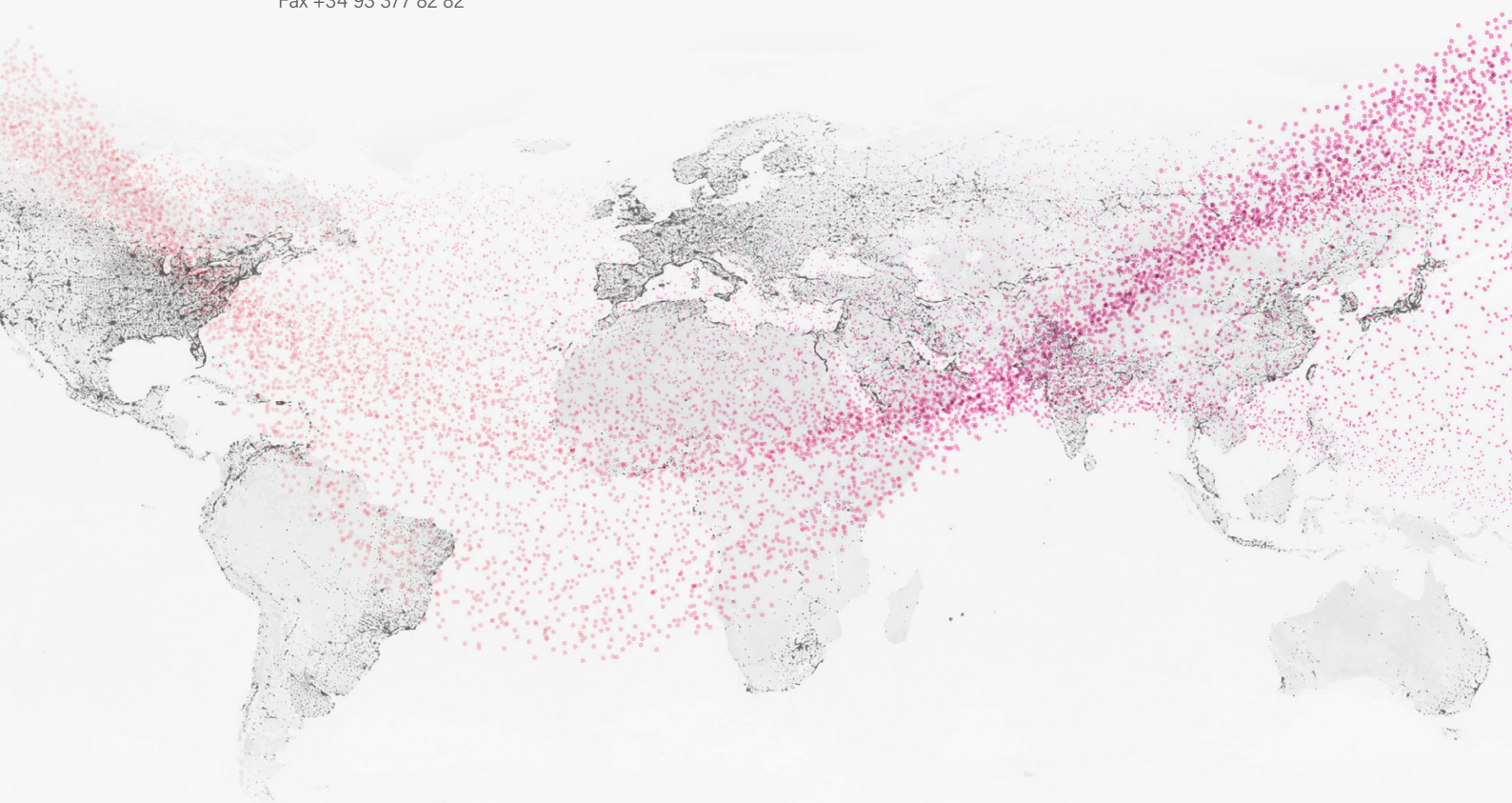
SILICI, 67-69  
08940 CORNELLA DE LLOBREGAT  
BARCELONA · SPAIN  
Tel. +34 93 377 85 85  
Fax +34 93 377 82 82

## INTERNATIONAL SALES

Tel. +34 93 475 08 64  
Fax +34 93 480 07 75  
export@dfelectric.es

## NATIONAL SALES

Tel. 93 475 08 64  
Fax 93 480 07 76  
comercial@dfelectric.es



dfelectric.es



According to the waste of electrical and electronic equipment directive, electrical material should not be part of the usual waste. This symbol alerts users that these products should be recycled according to local environmental waste disposal regulations.



The "electro technical expert" logo marked on the products included in this data sheet indicates that the installation of these products must be carried out by expert personnel with specialized knowledge.



To prevent electrical hazards, carry out the installation without voltage.



**Safety notice**  
Please capture the following QR code and read our safety notice carefully before installing our products.



The data reflected in this technical record are subject to the correct installation of the product in accordance with manufacturer's instructions, relevant installation standards and professional practices, maintained and used in applications for which they were made.

The products described in this document have been designed, developed and tested in accordance with specific standard. They are considered components that are integrated as part of installation, machine or equipment. The correct general operation of the referred product is responsibility of the manufacturer of the installation, machine or equipment.

DF ELECTRIC cannot guarantee the characteristics of an installation, machine or equipment that has been designed by a third party. Once a product has been selected, the user must verify that it is appropriate for its application, through the verifications and/or tests that it deems appropriate.

DF ELECTRIC retains the right to change the dimensions, specifications, materials or design of its products at any time with or without notice.

©2020 DF Electric. All rights reserved