

TRANSFORMERS

LOW VOLTAGE TRANSFORMERS · AUTOTRANSFORMERS · REACTORS

QUICK GUIDE

TR28
5.2

**Control and safety
or isolating
SINGLE-PHASE**
transformer



PRI VOLTAGE 0-230-400-460V ±15V	FREQUENCY 50/60Hz
SEC VOLTAGE 12-24V 24-48V 115-230V	CLASS I
THERMAL CLASS B (130°C) F (155°C)	PROTECTION INDEX IP20
MAX AMBIENT TEMPERATURE 40°C	DIELECTRIC STRENGTH PRI-SEC ≥ 4,5kV
	DIELECTRIC STRENGTH BETWEEN WINDINGS & METALLIC PARTS ≥ 2,5kV
POWER 25VA...1000VA	

TR28
2.2

**Control and safety
or isolating
SINGLE-PHASE**
transformer



PRI VOLTAGE 0-230-400V	FREQUENCY 50/60Hz
SEC VOLTAGE 12-24V 24-48V 115-230V	CLASS I
THERMAL CLASS B (130°C) F (155°C)	PROTECTION INDEX IP20
MAX AMBIENT TEMPERATURE 40°C	DIELECTRIC STRENGTH PRI-SEC ≥ 4,5kV
	DIELECTRIC STRENGTH BETWEEN WINDINGS & METALLIC PARTS ≥ 2,5kV
POWER 25VA...3000VA	

OTHER CHARACTERISTICS ON REQUEST

TR26

**Safety for
swimming-pool
SINGLE-PHASE**
transformer



PRI VOLTAGE 230V	CLASS I
SEC VOLTAGE 12V	PROTECTION INDEX IP00 - IP20
THERMAL CLASS B (130°C) F (155°C)	DIELECTRIC STRENGTH PRI-SEC ≥ 4,5kV
MAX AMBIENT TEMPERATURE 40°C	DIELECTRIC STRENGTH BETWEEN WINDINGS & METALLIC PARTS ≥ 2,5kV
FREQUENCY 50/60Hz	
POWER 130VA 350VA 700VA	

TR26
LED

**Safety for
swimming-pool
SINGLE-PHASE**
transformer



PRI VOLTAGE 230V	CLASS I ▶ 63VA 100VA ▶ 30VA
SEC VOLTAGE 12V	PROTECTION INDEX IP20
THERMAL CLASS B (130°C)	DIELECTRIC STRENGTH PRI-SEC ≥ 4,5kV
MAX AMBIENT TEMPERATURE 40°C	DIELECTRIC STRENGTH BETWEEN WINDINGS & METALLIC PARTS ≥ 2,5kV
FREQUENCY 50/60Hz	
POWER 30VA 63VA 100VA	

TR26H

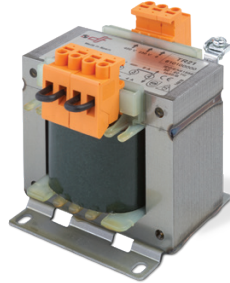
**Safety for
swimming-pool
SINGLE-PHASE**
transformer



PRI VOLTAGE 230V	CLASS I
SEC VOLTAGE 12V	PROTECTION INDEX IP20
THERMAL CLASS F (155°C)	DIELECTRIC STRENGTH PRI-SEC ≥ 4,5kV
MAX AMBIENT TEMPERATURE 40°C	DIELECTRIC STRENGTH BETWEEN WINDINGS & METALLIC PARTS ≥ 2,5kV
FREQUENCY 50/60Hz	
POWER 350VA	

TR21

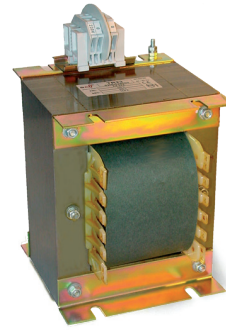
**Control
SINGLE-PHASE**
transformer



PRI VOLTAGE 0-230-400V	MAX AMBIENT TEMPERATURE 40°C
SEC VOLTAGE 12-24V 24-48V 115-230V	FREQUENCY 50/60Hz
SEC CONNECTION SERIAL PARALLEL	CLASS I
THERMAL CLASS B	PROTECTION INDEX IP00
	DIELECTRIC STRENGTH PRI-SEC > 4kV
POWER 40VA...1000VA	

TR22

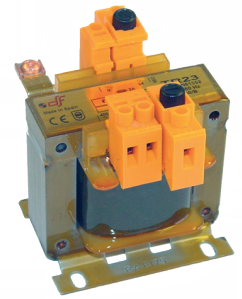
**Customer design
SINGLE-PHASE**
transformer



PRI VOLTAGE ON REQUEST	CLASS I
SEC VOLTAGE ON REQUEST	PROTECTION INDEX IP00 - IP23
THERMAL CLASS B-H	DIELECTRIC STRENGTH PRI-SEC > 4kV
MAX AMBIENT TEMPERATURE 40°C	
FREQUENCY 50/60Hz	
POWER 1,3kVA...31,5kVA	

TR23

**Customer design
SINGLE-PHASE**
transformer



PRI VOLTAGE ON REQUEST	FREQUENCY 50/60Hz
SEC VOLTAGE ON REQUEST	CLASS I
THERMAL CLASS B	PROTECTION INDEX IP00
MAX AMBIENT TEMPERATURE 40°C	DIELECTRIC STRENGTH PRI-SEC > 4kV
POWER 10VA...1000VA	

TRT33

Power isolating THREE-PHASE transformer



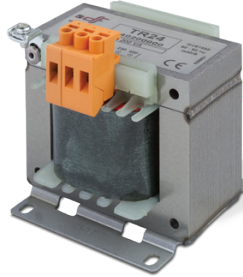
PRI VOLTAGE 400V	CLASS I
SEC VOLTAGE 230V	PROTECTION INDEX IP00 – IP23
THERMAL CLASS B / H	DIELECTRIC STRENGTH PRI-SEC > 4kV
MAX AMBIENT TEMPERATURE 40°C	CONEXION Dyn5
FREQUENCY 50/60Hz	

POWER
0,5kVA...100kVA

OTHER CHARACTERISTICS ON REQUEST

TR24

Reversible SINGLE-PHASE autotransformer



VOLTAGES 0-230-400V	CLASS I
THERMAL CLASS B	PROTECTION INDEX IP00
MAX AMBIENT TEMPERATURE 40°C	DIELECTRIC STRENGTH PRI-SEC > 3kV
FREQUENCY 50/60Hz	

POWER
100VA...6300VA

TRT30

Reversible dry type THREE-PHASE autotransformer



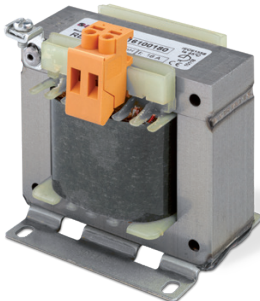
VOLTAGES 230-400V	CLASS I
THERMAL CLASS B / H	PROTECTION INDEX IP00 – IP23
MAX AMBIENT TEMPERATURE 40°C	DIELECTRIC STRENGTH PRI-SEC > 3kV
FREQUENCY 50/60Hz	

POWER
0,5kVA...200kVA

OTHER CHARACTERISTICS ON REQUEST

RE8

Line SINGLE-PHASE reactor



VOLTAGE DROP 4% at IN (230V)	CLASS I
THERMAL CLASS B	PROTECTION INDEX IP00
MAX AMBIENT TEMPERATURE 40°C	DIELECTRIC STRENGTH PRI-SEC > 3kV
FREQUENCY 50Hz	

RET9

Line THREE-PHASE reactor



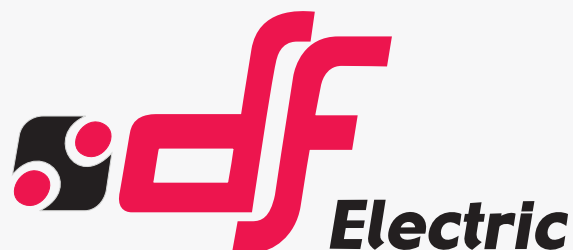
VOLTAGE DROP 4% at IN (400V)	CLASS I
THERMAL CLASS B-H	PROTECTION INDEX IP00
MAX AMBIENT TEMPERATURE 40°C	DIELECTRIC STRENGTH PRI-SEC > 4kV
FREQUENCY 50Hz	

RET9

Harmonic circuit filter THREE-PHASE reactor



VOLTAGE DROP 400V	THERMAL CLASS B-H
FILTERING FACTOR $P=0,07$ (7%)	MAX AMBIENT TEMPERATURE 40°C
fr 189Hz	FREQUENCY 50Hz
L TOLERANCE 3%	CLASS I
LINEARITY (95% IN) 1,8·IN	PROTECTION INDEX IP00
MAX PERMANENT OVERLOAD 1,17 · IN	DIELECTRIC STRENGTH PRI-SEC > 4kV



PROTECTING THE WORLD

HEAD OFFICE AND FACTORY

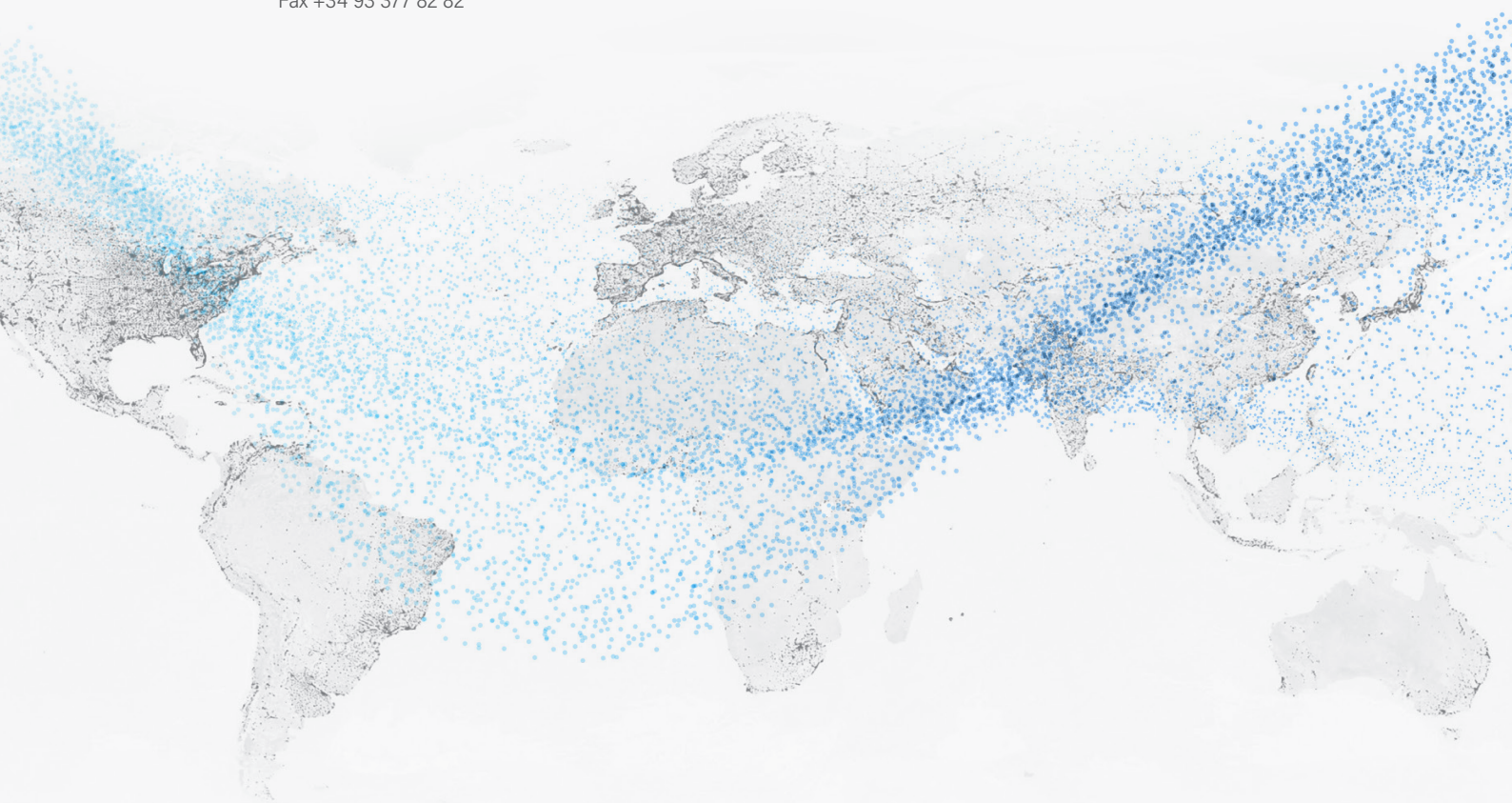
SILICI, 67-69
08940 CORNELLA DE LLOBREGAT
BARCELONA · SPAIN
Tel. +34 93 377 85 85
Fax +34 93 377 82 82

INTERNATIONAL SALES

Tel. +34 93 475 08 64
Fax +34 93 480 07 75
export@dfelectric.es

NATIONAL SALES

Tel. 93 475 08 64
Fax 93 480 07 76
comercial@dfelectric.es



dfelectric.es



According to the waste of electrical and electronic equipment directive, electrical material should not be part of the usual waste. This symbol alerts users that these products should be recycled according to local environmental waste disposal regulations.



The "electro technical expert" logo marked on the products included in this data sheet indicates that the installation of these products must be carried out by expert personnel with specialized knowledge.



To prevent electrical hazards, carry out the installation without voltage.



Safety notice
Please capture the following QR code and read our safety notice carefully before installing our products.



The data reflected in this technical record are subject to the correct installation of the product in accordance with manufacturer's instructions, relevant installation standards and professional practices, maintained and used in applications for which they were made.

The products described in this document have been designed, developed and tested in accordance with specific standard. They are considered components that are integrated as part of installation, machine or equipment. The correct general operation of the referred product is responsibility of the manufacturer of the installation, machine or equipment.

DF ELECTRIC cannot guarantee the characteristics of an installation, machine or equipment that has been designed by a third party. Once a product has been selected, the user must verify that it is appropriate for its application, through the verifications and/or tests that it deems appropriate.

DF ELECTRIC retains the right to change the dimensions, specifications, materials or design of its products at any time with or without notice.

©2023 DF Electric. All rights reserved