

HORUS®
PHOTOVOLTAIC
PROTECTION

QUICK GUIDE

HORUS[®]

PHOTOVOLTAGIC PROTECTION

fuse links & fuse holders for photovoltaic applications

Photovoltaic, or PV for short, is a technology that converts light directly into electricity. Photovoltaic is also the field of study relating to this technology and there are many research institutes devoted to work on photovoltaic.

Due to the growing need for solar energy, the manufacture of solar cells and solar photovoltaic array has expanded dramatically in recent years, making it the world's fastest-growing energy technology.

DF ELECTRIC develops specific fuse links and fuse holders to offer a compact, safety and economic protection solution in photovoltaic installations.

Cylindrical & NH fuse links with voltages up to 1000, 1100, 1200 and 1500V DC and fuse holders with voltages up to 1000, 1100 and 1500V DC.



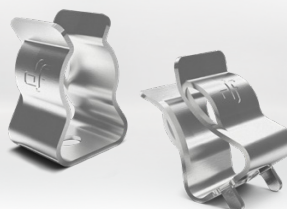
CYL gPV CYLINDRICAL fuse links

	10x38	14x51	10x85	10/14x85	22x65
U	1000V DC	1000V DC 1100V DC	1200V DC 1500V DC	1500V DC	1500V DC
In	1A...20A	25A 32A 15A 20A	20A 25A 2A...16A	20A...32A	40A...60A
BREAKING CAPACITY	30kA	30kA 10kA	10kA 30kA	10kA	30kA
STANDARDS	UL		UL		



Ø10 CLIP CONTACT CYLINDRICAL Ø10 fuse links

	PCB	SCREW
U	UP TO 1500V AC/DC	
In	25A	



PMX PMX CYLINDRICAL fuse holders

	10x38	14x51	22x65
U	1000V DC	1100V DC	1500V DC
In	32A	50A	100A
STANDARDS	SP UL		UL

**PATENTED
DESIGN**



PML_e PML CYLINDRICAL fuse holders



	10x85	10/14x85
U	1500V DC	
In	32A	
STANDARDS	UL	

**PATENTED
DESIGN**



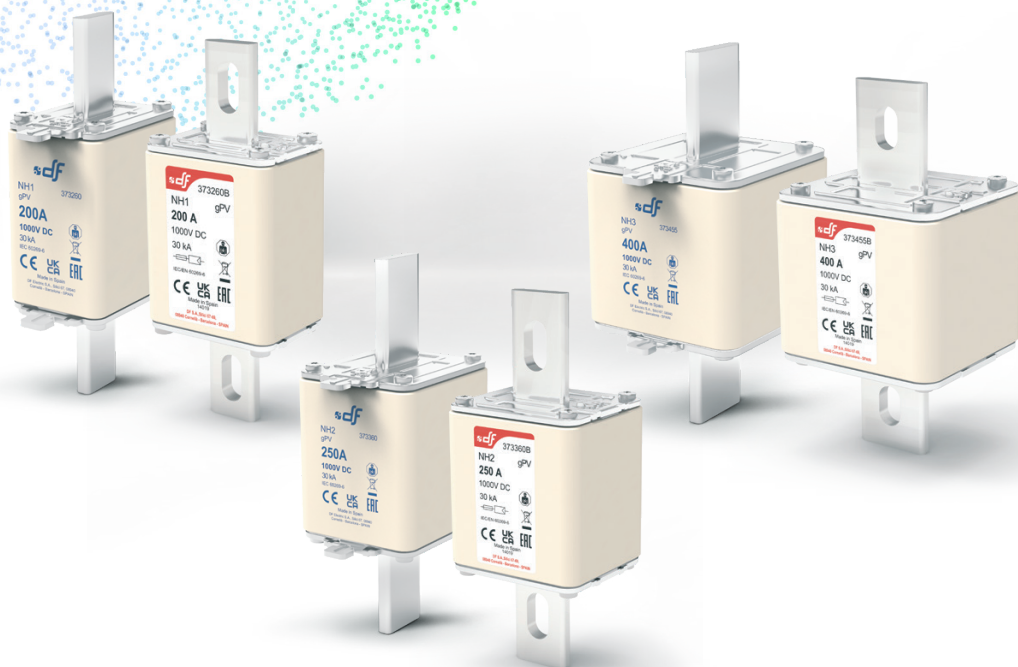
NH
gPV
NH 1000V DC
fuse links

NH1
NH2
NH3




U	1000V DC	1000V DC	1000V DC
In	25A...125A 160A 200A*	200A 250A	200A 250...400A*
BREAKING CAPACITY	30kA	30kA	30kA
STANDARDS **			

* UL PENDING

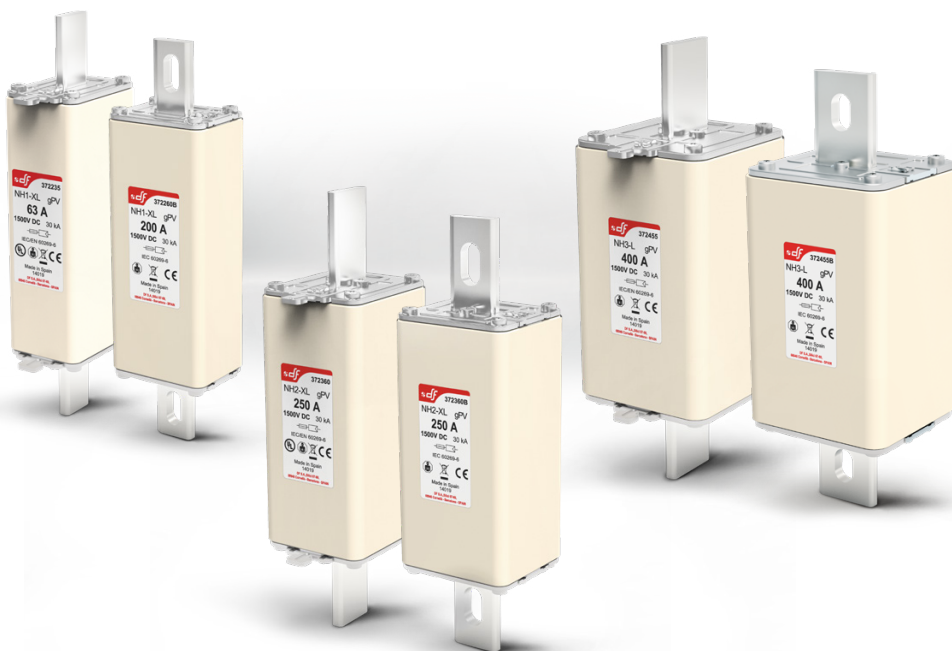
** ONLY STANDARD BLADE
BOLTED BLADE UL PENDING


NH
gPV
NH XL 1500V DC
fuse links

**NH1
XL**
**NH2
XL**
**NH3
L**

U	1500V DC	1500V DC	1500V DC
In	40A...63A 80...200A	200A 250A	315A...400A
BREAKING CAPACITY	UL > 30kA IEC > 100kA 30kA ^{40A, 80A} 30kA ^{200A}	UL > 30kA IEC > 100kA	UL > 30kA IEC > 100kA
STANDARDS *			

* NH1XL 200A NOT UL


NH
gG/gL & gS
NH 800V AC
fuse links

NH00
NHC1
NH1
NH3
gS
gG
gG
gG

U	800V AC	800V AC	800V AC	800V AC
In	25A...100A	25A...63A	80A...160A	200A...400A
BREAKING CAPACITY	120kA	80kA	80kA	80kA



ST
ST
NH 1000V DC
fuse bases

NH1

NH2

NH3

U 1000V DC 1000V DC 1000V DC

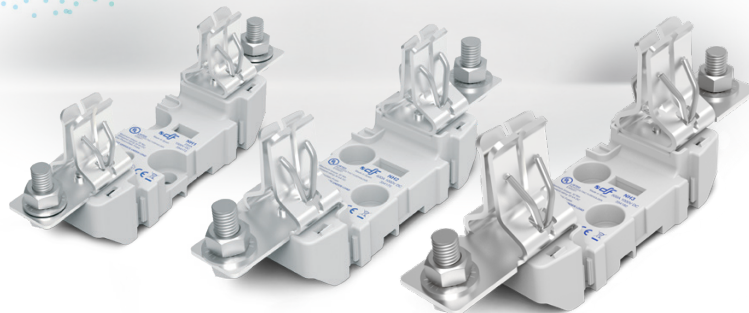
In 250A 400A 500A

STANDARDS

UL

UL

UL


ST
ST
NH XL 1500V DC
fuse bases

NH1
XL

NH2
XL

NH3
L

U 1500V DC 1500V DC 1500V DC

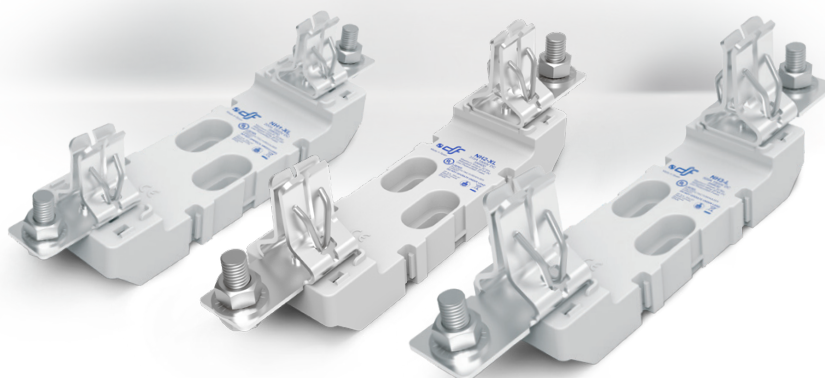
In 200A 315A 500A

STANDARDS

UL

UL

UL


ST
ST
NH 690V/800V AC
fuse bases

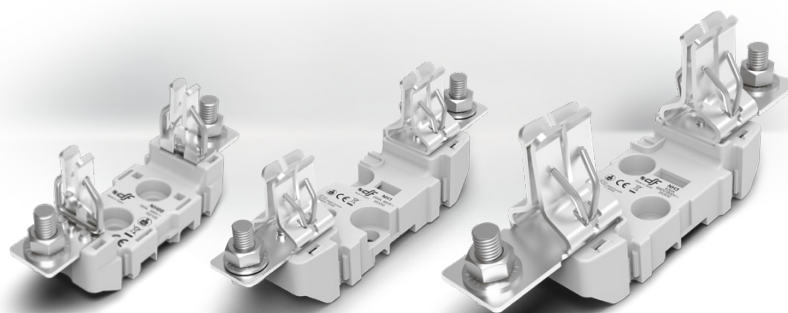
NH00

NH1

NH3

U 690V/800V AC 690V/800V AC 690V/800V AC

In 160A 250A 630A


NH
accessories
NH


MICROSWITCH

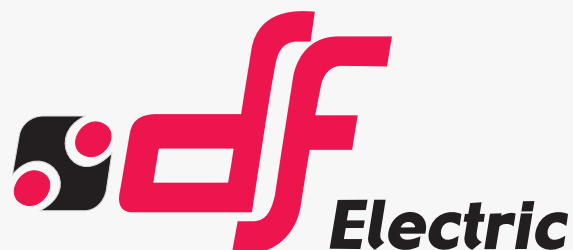


FUSE PULLER ST



FUSE PULLER XL

U			
1000V DC	•	•	—
1500V DC	•	—	—
800V AC	•	—	—



PROTECTING THE WORLD



HEAD OFFICE AND FACTORY

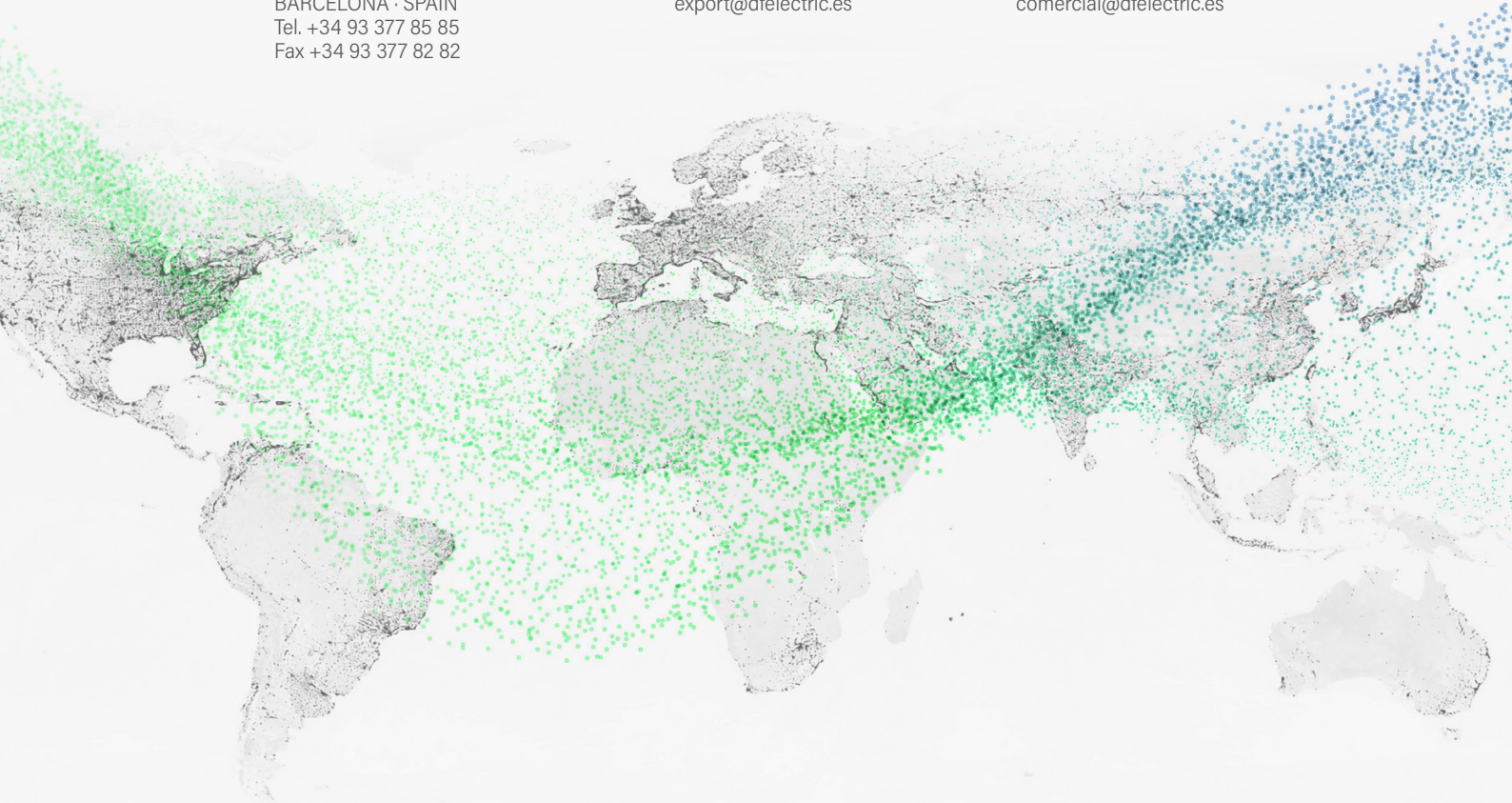
SILICI, 67-69
08940 CORNELLA DE LLOBREGAT
BARCELONA · SPAIN
Tel. +34 93 377 85 85
Fax +34 93 377 82 82

INTERNATIONAL SALES

Tel. +34 93 475 08 64
Fax +34 93 480 07 75
export@dfelectric.es

NATIONAL SALES

Tel. 93 475 08 64
Fax 93 480 07 76
comercial@dfelectric.es



dfelectric.es



According to the waste of electrical and electronic equipment directive, electrical material should not be part of the usual waste. This symbol alerts users that these products should be recycled according to local environmental waste disposal regulations.



The "electro technical expert" logo marked on the products included in this data sheet indicates that the installation of these products must be carried out by expert personnel with specialized knowledge.



To prevent electrical hazards, carry out the installation without voltage.



Safety notice
Please capture the following QR code and read our safety notice carefully before installing our products.



The data reflected in this technical record are subject to the correct installation of the product in accordance with manufacturer's instructions, relevant installation standards and professional practices, maintained and used in applications for which they were made.

The products described in this document have been designed, developed and tested in accordance with specific standard. They are considered components that are integrated as part of installation, machine or equipment. The correct general operation of the referred product is responsibility of the manufacturer of the installation, machine or equipment.

DF ELECTRIC cannot guarantee the characteristics of an installation, machine or equipment that has been designed by a third party. Once a product has been selected, the user must verify that it is appropriate for its application, through the verifications and/or tests that it deems appropriate.

DF ELECTRIC retains the right to change the dimensions, specifications, materials or design of its products at any time with or without notice.