



CYLINDRICAL

FUSE LINKS & FUSE HOLDERS/BASES

QUICK GUIDE

CYLINDRICAL

FUSE LINKS & FUSE HOLDERS/BASES

gG

gG
CYLINDRICAL
fuse links

	8x32	10x38	14x51	22x58
U	400V	500V 400V	690V 500V 400V	690V 500V 400V
In	0,5A...20A	0,5A...25A 32A	1A...25A 32A 40A 50A	2A...63A 80A 100A 125A
BREAKING CAPACITY	20kA	120kA	80kA 120kA	80kA 120kA



aM

aM
CYLINDRICAL
fuse links

	8x32	10x38	14x51	22x58
U	400V	500V 400V	690V 500V 400V	690V 500V 400V
In	1A...10A	0,16A...16A 20A 25A	0,25A...25A 32A...45A 50A	2A...63A 80A 100A 125A
BREAKING CAPACITY	20kA	120kA	80kA 120kA	80kA 120kA



PMX

PMX
CYLINDRICAL
fuse holders

**PATENTED
DESIGN**

	8x32	10x38	14x51	22x58
U	400V AC/DC	690V AC 750V DC 24V DC	690V 24V DC	690V 24V DC
In	25A	32A	50A	100A 125A
STANDARDS		UL US CSA IEC IR	UL US CSA IEC IR	UL US CSA IEC IR



**PMX
CC CLASS**

PMX CC CLASS
CYLINDRICAL
fuse holders

**PATENTED
DESIGN**

	CC
U	600V
In	30A
STANDARDS	UL CSA



CYLINDRICAL

FUSE LINKS & FUSE HOLDERS/BASES

PMC CYLINDRICAL fuse holders

	8x32	10x38
U	400V	500V
In	25A	32A

PATENTED DESIGN



PMF CYLINDRICAL fuse holders

	10x38
U	690V AC 750V DC
In	32A

PATENTED DESIGN



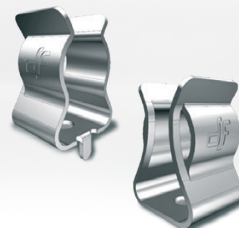
BAC CYLINDRICAL fuse holders

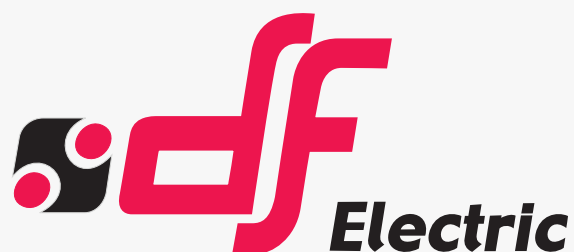
	14x51	22x58
U	690V AC 750V DC	690V AC 750V DC
In	50A	100A



Ø10 CLIP CONTACT CYLINDRICAL Ø10 fuse links

	PCB	SCREW
U	UP TO 1500V AC/DC	
In	25A	





PROTECTING THE WORLD



HEAD OFFICE AND FACTORY

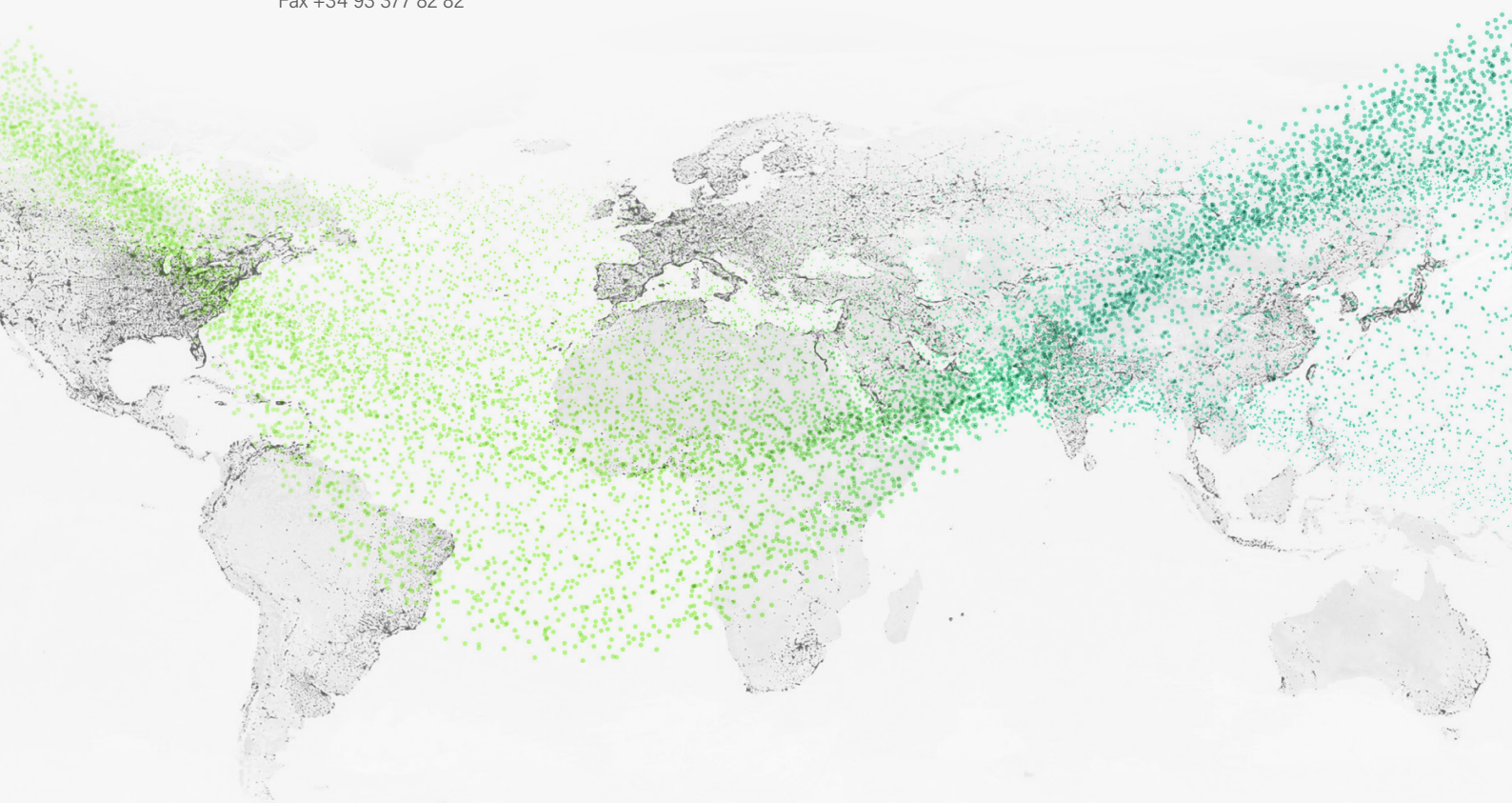
SILICI, 67-69
08940 CORNELLA DE LLOBREGAT
BARCELONA · SPAIN
Tel. +34 93 377 85 85
Fax +34 93 377 82 82

INTERNATIONAL SALES

Tel. +34 93 475 08 64
Fax +34 93 480 07 75
export@dfelectric.es

NATIONAL SALES

Tel. 93 475 08 64
Fax 93 480 07 76
comercial@dfelectric.es



dfelectric.es



According to the waste of electrical and electronic equipment directive, electrical material should not be part of the usual waste. This symbol alerts users that these products should be recycled according to local environmental waste disposal regulations.



The "electro technical expert" logo marked on the products included in this data sheet indicates that the installation of these products must be carried out by expert personnel with specialized knowledge.



To prevent electrical hazards, carry out the installation without voltage.



Safety notice
Please capture the following QR code and read our safety notice carefully before installing our products.



The data reflected in this technical record are subject to the correct installation of the product in accordance with manufacturer's instructions, relevant installation standards and professional practices, maintained and used in applications for which they were made.

The products described in this document have been designed, developed and tested in accordance with specific standard. They are considered components that are integrated as part of installation, machine or equipment. The correct general operation of the referred product is responsibility of the manufacturer of the installation, machine or equipment.

DF ELECTRIC cannot guarantee the characteristics of an installation, machine or equipment that has been designed by a third party. Once a product has been selected, the user must verify that it is appropriate for its application, through the verifications and/or tests that it deems appropriate.

DF ELECTRIC retains the right to change the dimensions, specifications, materials or design of its products at any time with or without notice.

©2023 DF Electric. All rights reserved